

# EUTRAC®



1~

2~

3~



Lighting tracks  
and adapters  
for innovative luminaries

## Lighting tracks and adapters for innovative luminaries



■ ■ ■ ■ ■ **Project:** Occhio store, München, **Product:** Sento faro track, **Designer:** Axel Meise, Christoph Kügler, **Manufacturer:** Occhio GmbH

**Project:** Sphinx Fine Art Gallery, **Product:** Microspot C with short and long snoots (EUT-211-AL), **Photo:** Precision Light Ltd, Andrew Molyneux, **Manufacturer:** Precision Lighting Ltd

**Project:** ROBERTO CAVALLI HQs & Showroom Milan, Italy, **Arch.:** Cavalli A&DD, Head Architect Barbara Picciolo, **Photo:** Beppe Raso, **Product:** PICTO, in-house design Artemide Architectural, **Manufacturer:** Artemide S.p.A.

**Project:** EDRA SHOWROOM Milan (Italy), **Architectural Project:** Massimo Morozzi, **Photo:** Gio Pini, **Product:** OTO, design Foster & Partners, **Manufacturer:** Artemide S.p.A.



## Providing power – Total light management Precise and efficient lighting



### We will implement your visions!

Our know how will speak for itself; with our broad range of lighting tracks and adapters we offer the right products for your lighting solution, in combination with our lighting control system - EUTRAC Intelligent Lighting - we can stage your lighting idea in a flexible, cost effective and intelligent way.

We are your competent partner to implement individual new product developments, in the lighting as well as other industries such as furniture, medical or shop outfitter.



**Design:** brains4design, **Product:** Ontero EC 125,  
**Manufacturer:** BÄRO GmbH&Co KG

**Design:** Axel Meise, Christoph Kügler, **Product:** Sento faro track,  
**Manufacturer:** Occhio GmbH

**Design:** arclite® energy mind® VISION, **Product:** trackVISION 10,  
**Manufacturer:** Arclite® Lichtvertrieb GmbH

**Design:** Selux Design, **Product:** CITYLIGHTS 130,  
**Manufacturer:** Semperlux AG

**Design:** Ralf Keferstein, **Product:** GATE B FOUR P,  
**Manufacturer:** OLIGO Lichttechnik GmbH



### ■ ■ EUTRAC Intelligent Lighting

The intelligent track	■ ■	06 - 07	■ ■	06 - 07
NetComposer - Lighting management system	■ ■	06 - 07	■ ■	06 - 07

### ■ ■ Tracks

Surface track	■ ■	08 - 17	■ ■	08 - 17
Suspension accessories	■ ■	18 - 19	■ ■	18 - 19
Pendent H-Profile	■	20 - 21	■	20 - 21
Flange less recessed profile	■	20 - 21	■	20 - 21
HighTrack	■	22 - 25	■	22 - 25
Recessed track	■	28 - 31	■	28 - 31

### ■ 3~ Adapter

MultiAdapter	■	32 - 33	■	32 - 33
UniCompactAdapter	■	32 - 33	■	32 - 33
MultiPowerAdapter	■	34	■	34
MultiCompactAdapter	■	35	■	35
ElectronicMultiAdapter	■	36	■	36
DALI-DimAdapter	■	37	■	37
DALI-SwitchAdapter	■	37	■	37
Retaining collar	■	44 - 45	■	44 - 45
PowersocketAdapter	■	47	■	47
MechanicalAdapter	■	47	■	47
WireAdapter	■	47	■	47
Cover profile	■	47	■	47

### ■ 1~ Adapter

MultiAdapter	■	38 - 39	■	38 - 39
MultiPowerAdapter	■	40	■	40
MultiCompactAdapter	■	41	■	41
ElectronicMultiAdapter	■	42	■	42
DALI-DimAdapter	■	43	■	43
DALI-SwitchAdapter	■	43	■	43
Retaining collar	■	44 - 45	■	44 - 45
PowersocketAdapter	■	46	■	46
MechanicalAdapter	■	46	■	46
WireAdapter	■	46	■	46

### ■ ■ Monopoint

Surface Monopoint	■ ■	48 - 49	■ ■	48 - 49
Recessed Monopoint	■ ■	48 - 49	■ ■	48 - 49

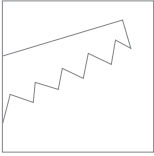
### ■ ■ Technical information

Mechanical load	■ ■	50	■ ■	50
Planning help	■ ■	51	■ ■	51
Connecting and securing help	■ ■	52 - 53	■ ■	52 - 53
Index / EUTRAC worldwide	■ ■	54 - 55	■ ■	54 - 55

1~

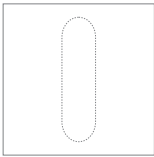
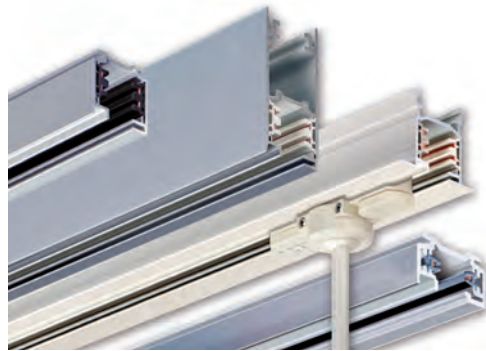
3~

## The lighting track system



### Easy to cut

Cutting to the required length can be done easily on site. No need for time consuming cutting back or bending back of copper conductors. No need for any special tools.



### Mounting points

Surface track with pre-punched slotted holes every 333 mm (3~ track), and every 203 mm (1~ track). Slotted holes are 6 mm – 25 mm. Holes can be easily opened with a screwdriver or a similar tool.

The EUTRAC lighting track system - tracks, system components, adapters and mono-points - offers flexible and wide options of power supply products for your lighting structure.

The EUTRAC 3~ Track does not only work with EUTRAC adapters but also with other universal adapters from other suppliers. Furthermore the EUTRAC adapters will fit into other manufactured universal tracks. All EUTRAC products are designed and tested against the most current European standards.

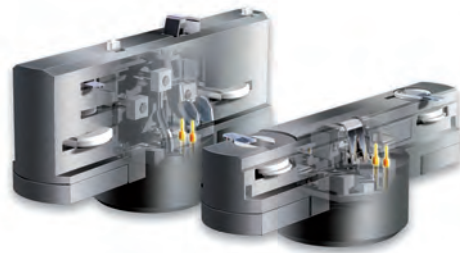
All EUTRAC plastic parts are manufactured out of self-extinguishing polycarbonate according to UL 94, class V0. All power and data bus contacts are manufactured out of high quality material for very high and good connectivity. This will guarantee a high durability and a long life cycle.

- white
- black
- ◇ silver
- grey

### Colours

Tracks are available in powder coated, white (close to RAL 9016) and black (close to RAL 9005) or silver anodized. System components and adapter are available in four different colours, white (close to RAL 9016), black (close to RAL 9005), grey (close to RAL 7038) and silver painted. Tracks are colour matched to components and adapters as close as possible.

All products are tested and certificated by ENEC 05, and comply with European standards EN 60 570 and EN 60 598, all products are CE marked. For the North American market the products are tested and certificated according to the UL standards. For the Russian market products are tested and certificated according to the GOST standard.



## The lighting track system with full data – functionality

... will become an intelligent track system by simply using a lighting control system in your individual project:

### Public buildings, offices, conferences

Calling light scenes for different activities, motion sensors connected to light fixtures in offices or other workplaces and light sensors for daylight-dependent lighting management. Besides visual ergonomics, EUTRAC Intelligent Lighting offers also significant potential for savings on energy costs in offices and administrative buildings.

### Exhibitions, museums, trade fairs

Exhibits and presentations depend on the right light. In museums and at trade fairs, EUTRAC Intelligent Lighting offers new possibilities for showing objects in the right light, at the right time. Using timers, dimmers and light/motion sensors, lighting management can offer a whole range of technical possibilities to ensure intelligent use of modern lighting technology. This does not only save energy but may bring benefits for reasons of conservation too.

### Architecture, building facades, events

Creative light scenes convert building facades and stages for shows or events into unique experiences. Use of specific lighting inside and outside of a building will help improving corporate appearance. In addition media facades are used to communicate visual messages and can be flexibly programmed with the help of a professional lighting management system.

### Hotels, restaurants, shops

Today's products and brands are set in scenes using light. Modern lighting management offers convenient and practical solutions for showrooms, hotels and restaurants. Automatic light sequences can be used for dynamic lighting in shops. A room can be simply redecorated using blend of coloured light, changing its appearance without having to change the room itself.

### Airports, stations, underground garages

Thanks to lighting management systems, lighting in public areas become increasingly more professional. With EUTRAC Intelligent Lighting, light can be optimised and adjusted according to requirements. Light will be controlled in brightness and colour, switched on and off or dimmed according to needs, times or events.

**EUTRAC DALI**  
the intelligent track™



Light scene control  
Light direction  
Colour change  
Data protocol  
Energy efficient  
Motion sensor

Interactive  
Easy operation  
Lamp failure detection  
Time switching  
Day light control



For further information visit [www.intelligentlighting.de](http://www.intelligentlighting.de)

## The EUTRAC NetComposer, as the heart of an Intelligent Lighting control system, offers all possibilities to implement your lighting ideas into lighting solutions.

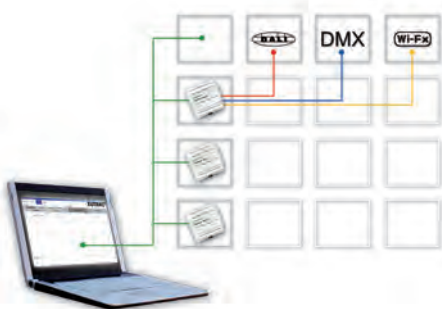
### Explore the functionality

#### The NetComposer

- Communicates via three different digital control protocols, DALI, DMX/RDM and Wi-Fx wireless.
- Allows interconnection of up to 255 NetComposer through the ethernet building structure and therefore controllability of a max. of 32.000 light fixtures.
- Manages devices in 128 lighting groups and 128 global lighting scenes.
- Offers manual addressing, fully DMX/RDM functionality, time switching program with ASTRO functionality, colour / white light control, graphic "moving light" operation, day light control / motion sensor control, energy saving mode / power off functionality (switch off all standby consumer), logic modules / functionalities, APP user interface (Apple IOS, Windows WIN 7, Android).



**Project:** Grange Tower Bridge Hotel  
**Lighting design:** BSE3d  
**Product:** Track Mounted DR8 with 8° LED Head  
**Manufacturer:** Remote Controlled Lighting Ltd.



### For your individual project specification

#### Energy-efficient lighting

To reduce energy consumption, presence detectors and daylight sensors as well as automatic disconnection from the mains network in standby mode, help improving the energy balance.

#### Flexible lighting

Practical and economical solutions for multi-functional use of rooms and buildings.

#### Ambience lighting

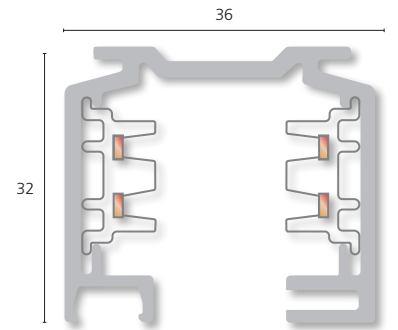
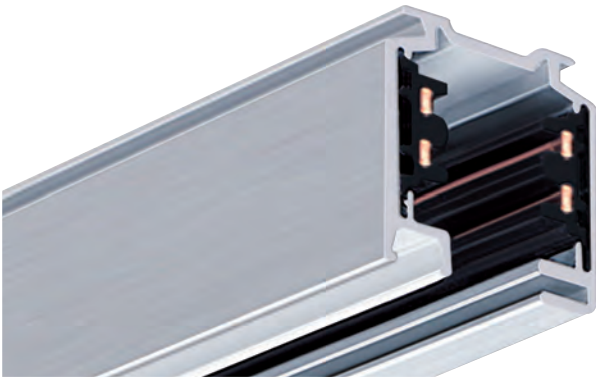
Emotional wellness lighting and colour control for light moods and light experiences.

#### Stage lighting

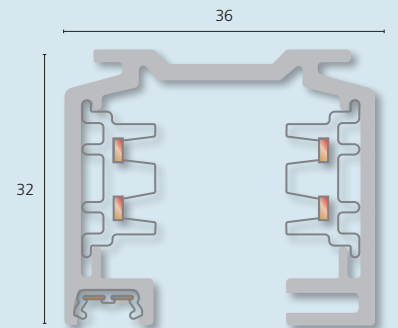
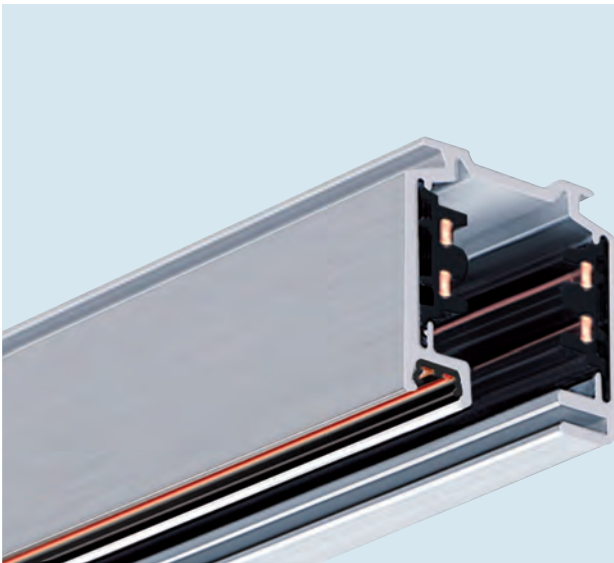
Creativity for sales, presentations and building facades, as well as for events or theatres.

3~

## Surface track



## + Data bus



Mechanical load:  
page 50



Wiring diagram and  
information: page 52



Cutting to length possible  
on site



Weight per meter:  
0.94 Kg



Pre-punched slotted holes



Suspension components:  
page 18/19



**5-conductor surface track** for three circuits, consists of an extruded aluminium profile and two PVC supporter profiles, each with two impeded 2.5 mm<sup>2</sup> cross section copper conductors, for three independent switchable circuits, earthing through the aluminium profile.

Easily field cut able with a standard saw, no cutting back or bending back of conductors necessary. The track has pre-punched slotted holes and may be used within arm's reach.

EUTRAC adapters with data bus contacts can be used in tracks without data bus. Data functionality is not available in those cases.

		○	●	◇
1m	25-10	1	2	3
2m	25-20	1	2	3
3m	25-30	1	2	3
4m	25-40	1	2	3

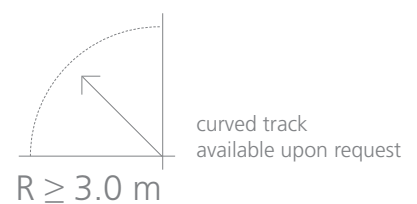
### + Data bus

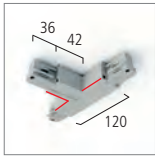
**7-conductor surface track** for three circuits plus data bus, consists of an extruded aluminium profile and two PVC supporter profiles, each with two impeded 2.5 mm<sup>2</sup> cross section copper conductors, plus one PVC supporter profile with two impeded 1 mm<sup>2</sup> cross section nickel plated copper conductors, for three independent switchable circuits, earthing through the aluminium profile plus two data conductors.

Easily field cut able with a standard saw, no cutting back or bending back of conductors necessary. The track has pre-punched slotted holes and may be used within arm's reach. The track system can be integrated into a building management system. Adapters with data bus contacts and SELV safety device ensure compliance with the Safety Extra Low Voltage regulations (SELV according to EN 60950).

The data information can be picked up anywhere along the track via data bus equipped adapters. Beside the DALI protocol the data bus can be used for DMX, 0-10V or KNX protocols. Adapters without data bus contacts can be also used in tracks with data bus. Data functionality is not available in those cases.

		○	●	◇
1m	225-10	1	2	3
2m	225-20	1	2	3
3m	225-30	1	2	3
4m	225-40	1	2	3

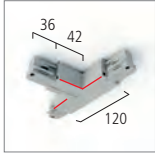




**T-coupler**  
with feeding option  
earth inside right

555 1 1212

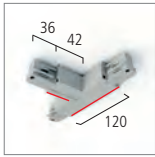
○	●	◇	●
1	2	3	8



**T-coupler**  
with feeding option  
earth inside left

555 1 1213

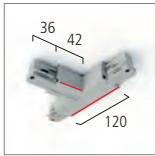
○	●	◇	●
1	2	3	8



**T-coupler**  
with feeding option  
earth outside right

555 1 1214

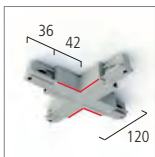
○	●	◇	●
1	2	3	8



**T-coupler**  
with feeding option  
earth outside left

555 1 1215

○	●	◇	●
1	2	3	8



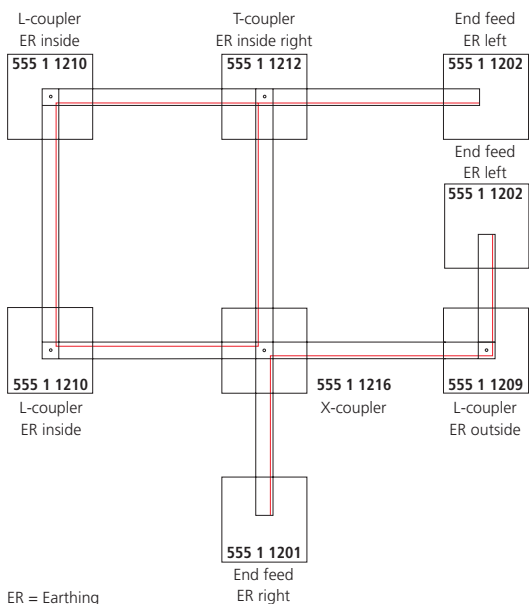
**X-coupler**  
with feeding option

555 1 1216

○	●	◇	●
1	2	3	8

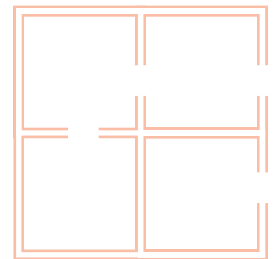
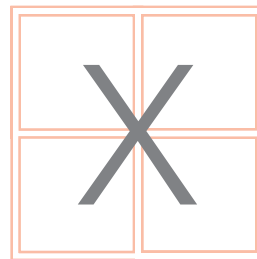
	○	●	◇	●
555 2 1212	1	2	3	8
555 2 1213	1	2	3	8
555 2 1214	1	2	3	8
555 2 1215	1	2	3	8
555 2 1216	1	2	3	8

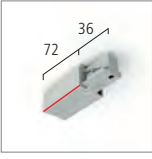
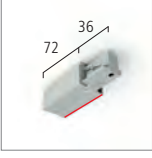


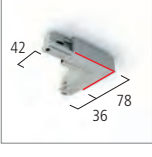
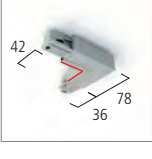
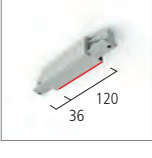
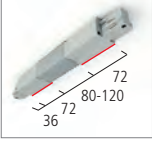
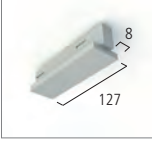
earth run layout help



connection diagram for data bus wiring layout

Attention: no closed circle structure



			○	●	◇	●		○	●	◇	●	
	<b>End feed</b> earth right	555 1 1201	1	2	3	8		555 2 1201	1	2	3	8
	<b>End feed</b> earth left	555 1 1202	1	2	3	8		555 2 1202	1	2	3	8
	<b>End cap</b>	555 0 1217	1	2	3	8		555 0 1217	1	2	3	8
	<b>Straight coupler</b> to join two sections of track electrically. For static reason order mechanical coupler (page 18/19) if suspended via pendant rod or wire	555 1 1206	1	2	3	8		555 2 1206	1	2	3	8
	<b>L-coupler</b> with feeding option earth outside	555 1 1209	1	2	3	8		555 2 1209	1	2	3	8
	<b>L-coupler</b> with feeding option earth inside	555 1 1210	1	2	3	8		555 2 1210	1	2	3	8
	<b>I-coupler</b> with feeding option	555 1 1208	1	2	3	8		555 2 1208	1	2	3	8
	<b>Flex-coupler</b> 30° to 330° with feeding option	555 1 1211	1	2		8		555 2 1211	1	2		8
	<b>Mid feed</b> to be placed anywhere along the track; track cutting not required	555 1 5203	1	2	3			555 2 5203	1	2	3	

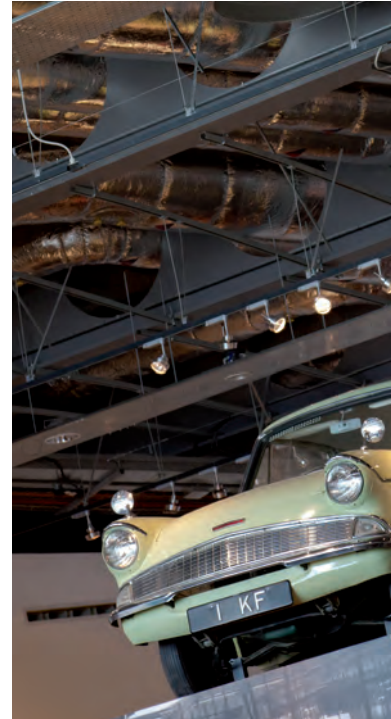


**Project:** Museum of Liverpool, **Lighting design:** Sutton Vane Associates,  
**Product:** Radar ML (EUT-143-AL), **Manufacturer:** Precision Lighting Ltd,  
**Photo:** Redshift Photography, David Thrower

**Project:** Shop Waschsalon in Westerstede, Deutschland, **Product:** Alec 10 EM MASTER  
**Manufacturer:** Arclite® Lichtvertrieb GmbH, **Photo:** Axel Hass

**Project:** Bürokompetenz Heinr. Hünicke, Lübeck, **Product:** Ontero CS 170,  
**Manufacturer:** BÄRO GmbH&Co KG

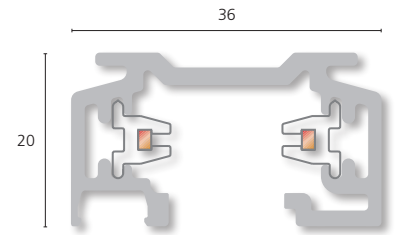
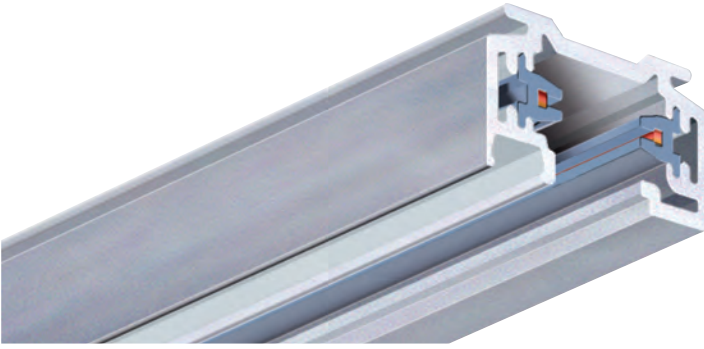
**Project:** TUCANO SHOWROOM Milan (Italy), **Arch.:** Roberto Paoli, **Photo:** Beppe raso,  
**Product:** OTO, design Foster & Partners, **Manufacturer:** Artemide S.p.A.



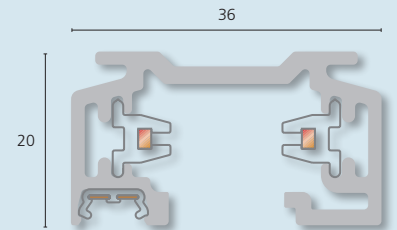
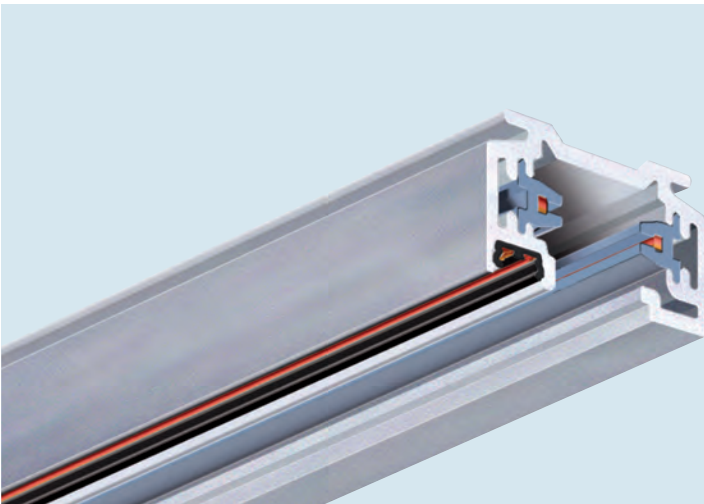


1~

## Surface track



## + Data bus



Mechanical load:  
page 50



Wiring diagram and  
information: page 52



Cutting to length possible  
on site



Weight per meter:  
0.69 Kg



Pre-punched slotted holes



Suspension components:  
page 18/19

**3-conductor surface track** for one circuit, consists of an extruded aluminium profile and two PVC supporter profiles with impeded 3.4 mm<sup>2</sup> cross section copper conductor, earthing trough the aluminium profile.

Easily field cut able with a standard saw, no cutting back or bending back of conductors necessary. The track has pre-punched slotted holes and may be used within arm's reach.

EUTRAC adapters with data bus contacts can be used in tracks without data bus. Data functionality is not available in those cases.

		○	●	◇
1m	235-10	1	2	3
2m	235-20	1	2	3
3m	235-30	1	2	3
4m	235-40	1	2	3

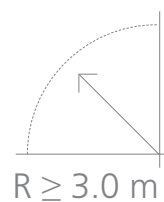
## + Data bus

**5-conductor surface track** for one circuit plus data bus, consists of an extruded aluminium profile and two PVC supporter profiles with impeded 3.4 mm<sup>2</sup> cross section copper conductors, plus one PVC supporter profile with two impeded 1 mm<sup>2</sup> cross section nickel plated copper conductors, earthing through the aluminium profile.

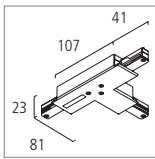
Easily field cut able with a standard saw, no cutting back or bending back of conductors necessary. The track has pre-punched slotted holes and may be used within arm's reach. The track system can be integrated into a building management system. Adapters with data bus contacts and SELV safety device ensure compliance with the Safety Extra Low Voltage regulations (SELV according to EN 60950).

The data information can be picked up anywhere along the track via data bus equipped adapters. Beside the DALI protocol the data bus can be used for DMX, 0-10V or KNX protocols. Adapters without data bus contacts can be also used in tracks with data bus. Data functionality is not available in those cases.

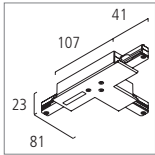
		○	●	◇
1m	238-10	1	2	3
2m	238-20	1	2	3
3m	238-30	1	2	3
4m	238-40	1	2	3



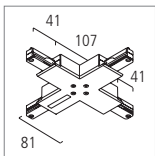
curved track  
available upon request



**T-coupler**  
with feeding option  
earth inside right



**T-coupler**  
with feeding option  
earth inside left

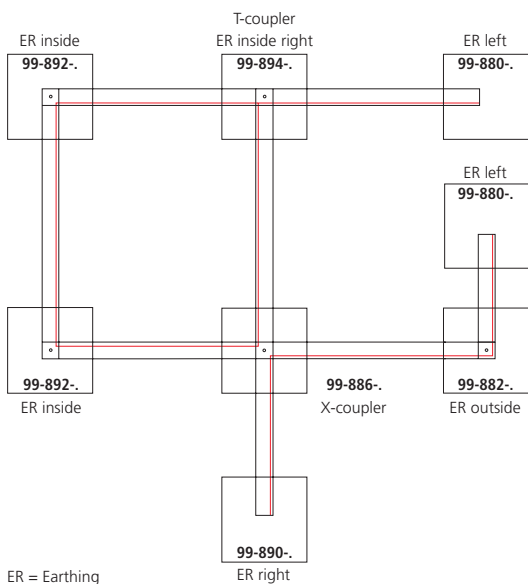


**X-coupler**  
with feeding option

	○	●	◇
99-894-	1	2	3
99-884-	1	2	3
99-886-	1	2	3

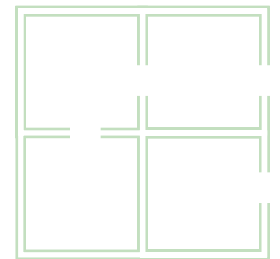
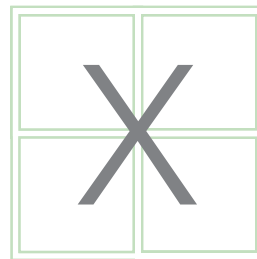
	○	●	◇
99-869-	1	2	3
99-867-	1	2	3
99-871-	1	2	3

earth run layout help



connection diagram for data bus wiring layout

Attention: no closed circle structure



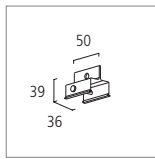


		○	●	◇		○	●	◇	
	<b>End feed earth right</b>	99-890-	1	2	3	99-859-	1	2	3
	<b>End feed earth left</b>	99-880-	1	2	3	99-857-	1	2	3
	<b>End cap</b>	99-878-	1	2	3	99-878-	1	2	3
	<b>Straight coupler</b> to join two sections of track electrically. For static reason order mechanical coupler (page 18/19) if suspended via pendant rod or wire	99-856-	1	2	3	99-855-	1	2	3
	<b>L-coupler with feeding option earth outside</b>	99-882-	1	2	3	99-863-	1	2	3
	<b>L-coupler with feeding option earth inside</b>	99-892-	1	2	3	99-865-	1	2	3
	<b>I-coupler with feeding option</b>	99-897-	1	2	3	99-896-	1	2	3
	<b>Flex-coupler 30° to 330° with feeding option</b>	99-888-	1	2		99-873-	1	2	
	<b>Mid feed</b> to be placed anywhere along the track; track cutting not required	99-862-	1	2	3	99-861-	1	2	3

1~

3~

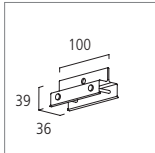
## Suspension components for surface track



### Fastening clip

for suspension with fast hanger  
98-679-0 or chain  
material: galvanized steel

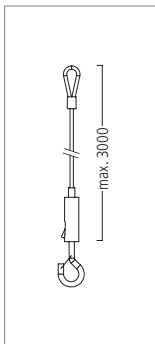
■ ■ 98-697-0



### Mechanical fastening coupler

for suspension with fast hanger  
98-679-0 or chain  
material: galvanized steel

■ ■ 98-672-0

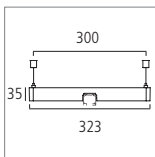


### Steel wire with fast hanger

for fastening clip  
height adjustable

L = 3.0 meter, silver

■ ■ 98-679-0



### Traverse

for balanced suspension, to be  
placed anywhere along the track,  
power supply possible via mid-  
feed and pendant rod  
material: die cast aluminium  
powder coated

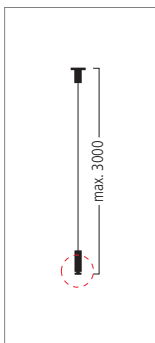
suspension steel wire 98-641-0  
or 98-643-0 to be ordered  
separately

■ ■ 98-645-

1

2

3



### Suspension steel wire ECO

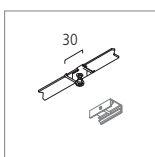
for mounting at pre punched  
slotted holes without need of  
pendant clips, incl. wire and  
ceiling fixing set, nickel plated  
height adjustable

L = 1.5 meter

L = 3.0 meter

■ ■ 98-641-0

■ ■ 98-643-0



### Fixing clip

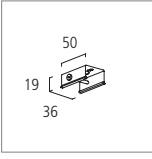
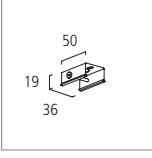
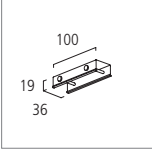
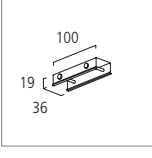
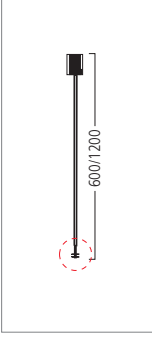
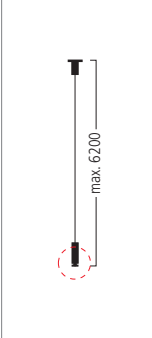
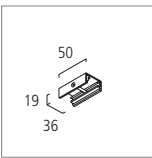
for T-Bar, incl. M6 nut for ceiling  
clip 99-018-  
material: galvanized steel

■ ■ 88-000-0

○

●

◇

			○	●	◇
	<b>Pendant clip</b> for suspension by steel wire or pendant rod, incl. M13 x 1 nut material: aluminium anodized or powder coated	■ ■ 99-075-	1	2	3
	<b>Pendant clip</b> for suspension by steel wire or pendant rod, incl. M13 x 1 nut material: galvanized steel	■ ■ 98-698-0			
	<b>Mechanical coupler</b> for suspension by steel wire or pendant rod, incl. M13 x 1 nut material: aluminium anodized or powder coated	■ ■ 99-123-	1	2	3
	<b>Mechanical coupler</b> for suspension by steel wire or pendant rod, incl. M13 x 1 nut material: galvanized steel	■ ■ 98-699-0			
	<b>Pendant rod</b> Ø 13 mm, cut to length on site to be used with pendant clip or mechanical coupler  L = 0.6 meter L = 1.2 meter	■ ■ 99-905- ■ ■ 99-906-	1 1	2 2	3 3
	<b>Suspension steel wire</b> to be used with pendant clip or mechanical coupler Height adjustable  L = 1.5 meter L = 3.0 meter L = 6.2 meter	■ ■ 99-318-0 ■ ■ 99-319-0 ■ ■ 88-620-0			
	<b>Ceiling clip</b> for ceiling mounting to level uneven ceiling, with slotted hole 14 x 7 mm for T-Bar mounting use mounting clip 88-000-0 material: aluminium anodized or powder coated	■ ■ 99-018-	1	2	3



■ ■ ■ ■ ■ **Project:** Collegium Hungaricum Berlin, Deutschland, **Arch.:** Schweger Assoziierte Gesamtplanung GmbH Hamburg/Berlin/München, **Product:** Semperlux AG i-trac SOFT, i-trac WALL, Einbau-Downlights, Satinlight, **Manufacturer:** Semperlux AG



Mechanical load:  
page 50



Cutting to length possible  
on site



**Pendant H-Profile**

To be used with 3~ surface track, robust construction for suspension point distance up to 3 meter (max. 20 Kg per suspension point). Upper compartment for integration of up light / LED fixtures or for use of installation and data wires.



Suspension components:  
page 18/19



Weight per meter:  
1.56 Kg

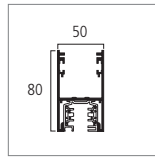


**Recessed flush mounted profile**

To be used with 3~ surface track for flush mounting in concrete or plaster board ceiling.



Weight per meter:  
0.88 Kg



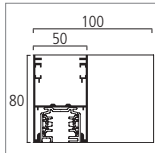
**Pendant H-Profile**

for 3~ surface track, to suspension via steel wire or pendant rod, material: aluminium profile silver anodized or powder coated L = 4075 mm

459-40-



1 2 3 8

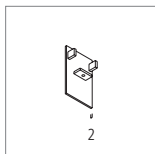


**L-coupler**

for H-Profile (110 x 110 mm) material: aluminium profile powder coated

557 0 1315

1 2 8

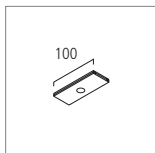


**Endplate**

material: steel powder coated

99-687-

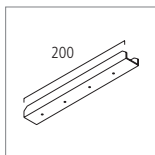
1 2 8



**Fixing device**

for suspension via steel wire or pendant rod Ø 13 mm material: galvanized steel

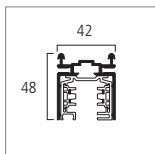
99-689-0



**Mechanical coupler**

material: galvanized steel

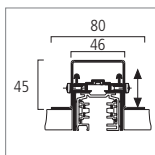
99-688-0



**Recessed flush mounted profile**

for 3~ surface track, incl. 12 slider nuts and two end cap plates material: aluminium profile raw L = 4075 mm

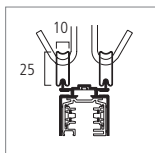
18-400



**Mounting brackets**

for fixing recessed mounting profile made of perforated steel, fixing by self-tapping screws, adjustment 8 - 28 mm, 6 pieces per packing unit

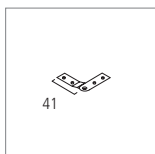
99-619-0



**Snap hanger**

for suspension with fast fixing devices provided on site, 6 pieces per packing unit

557 0 5321 0



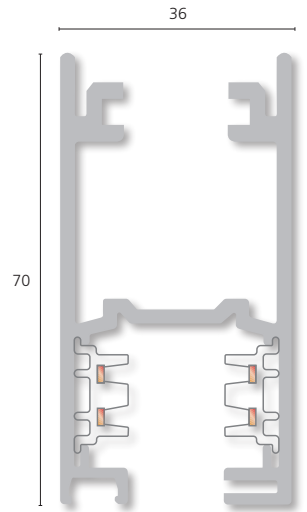
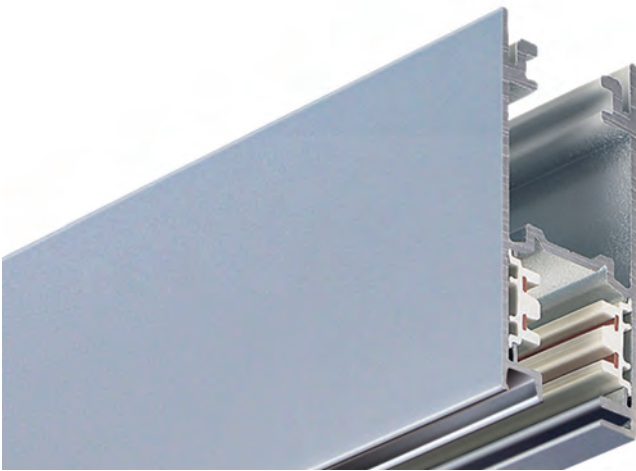
**Mechanical mitre coupler**

60° to 300°

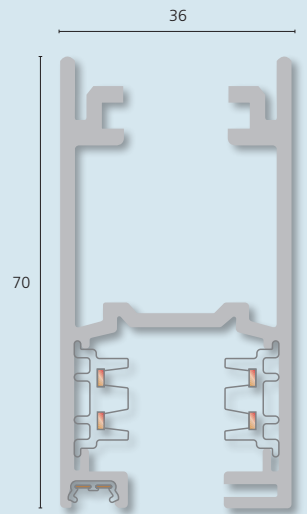
99-232-0

3~

## HighTrack



### + Data bus



Mechanical load:  
page 50



Wiring diagram and  
information: page 52



Suspension components:  
page 18/19



Weight per meter:  
1.68 Kg



Cutting to length possible  
on site

**5-conductor HighTrack** for three circuits and upper compartment for LED fixtures or installation and data wires, consists of an extruded aluminium profile and two PVC supporter profiles, each with two impeded 2.5 mm<sup>2</sup> cross section copper conductors, for three independent switchable circuits, earthing through the aluminium profile.

Easily field cut able with a standard saw, no cutting back or bending back of conductors necessary. The track may be used within arm's reach.

The 3~ circuit HighTrack is an architectural design element which also allows to bridge long suspension distances. Suspension brackets (3 respectively 4) for pendant rod or steel wire included.

EUTRAC adapters with data bus contacts can be used in HighTrack without data bus. Data functionality is not available in those cases.

		○	●	◇
2m	19-20	1	2	3
3m	19-30	1	2	3
4m	19-40	1	2	3

## + Data bus

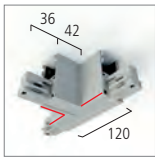
**7-conductor HighTrack** for three circuits plus data bus and upper compartment for LED fixtures or installation and data wires, consists of an extruded aluminium profile and two PVC supporter profiles, each with two impeded 2.5 mm<sup>2</sup> cross section copper conductors, plus one PVC supporter profile with two impeded 1 mm<sup>2</sup> cross section nickel plated copper conductors, for three independent switchable circuits, earthing through the aluminium profile plus two data conductors.

Easily field cut able with a standard saw, no cutting back or bending back of conductors necessary. The track may be used within arm's reach. The track system can be integrated into a building management system. Adapters with data bus contacts and SELV safety device ensure compliance with the Safety Extra Low Voltage regulations (SELV according to EN 60950).

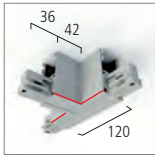
The 3~ circuit HighTrack is an architectural design element which also allows to bridge long suspension distances. Suspension brackets (3 respectively 4) for pendant rod or steel wire included.

The data information can be picked up anywhere along the track via data bus equipped adapters. Beside the DALI protocol the data bus can be used for DMX, 0-10V or KNX protocols. Adapters without data bus contacts can be also used in tracks with data bus. Data functionality is not available in those cases.

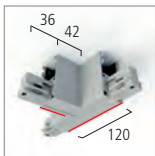
		○	●	◇
2m	219-20	1	2	3
3m	219-30	1	2	3
4m	219-40	1	2	3



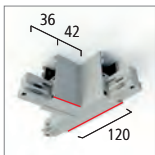
**T-coupler**  
with feeding option  
earth inside right



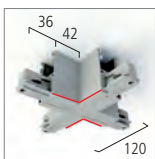
**T-coupler**  
with feeding option  
earth inside left



**T-coupler**  
with feeding option  
earth outside right



**T-coupler**  
with feeding option  
earth outside left

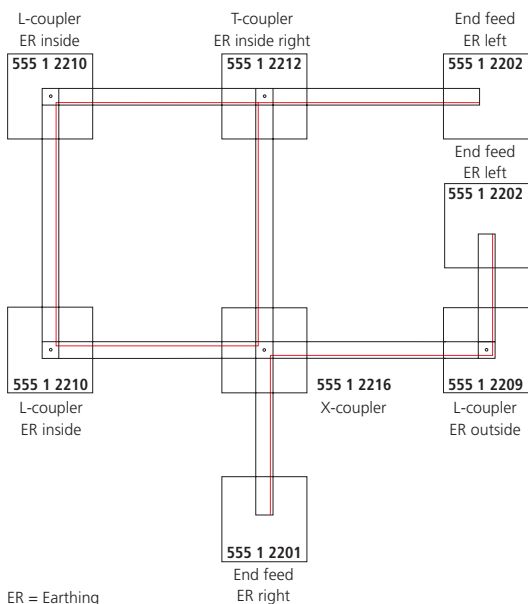


**X-coupler**  
with feeding option

	○	●	◇
555 1 2212	1	2	3
555 1 2213	1	2	3
555 1 2214	1	2	3
555 1 2215	1	2	3
555 1 2216	1	2	3

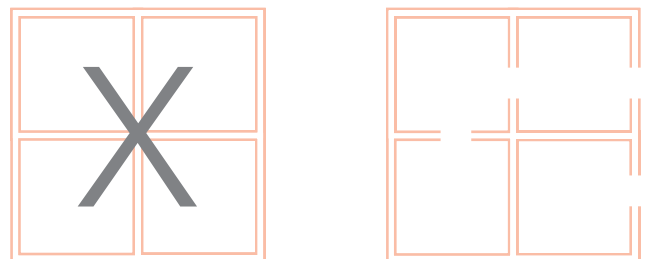
	○	●	◇
555 2 2212	1	2	3
555 2 2213	1	2	3
555 2 2214	1	2	3
555 2 2215	1	2	3
555 2 2216	1	2	3

earth run layout help



connection diagram for data bus wiring layout

Attention: no closed circle structure





		○	●	◇		○	●	◇	
	<b>End feed</b> earth right	555 1 2201	1	2	3	555 2 2201	1	2	3
	<b>End feed</b> earth left	555 1 2202	1	2	3	555 2 2202	1	2	3
	<b>End cap</b>	555 0 2217	1	2	3	555 0 2217	1	2	3
	<b>Electrical and mechanical straight coupler</b> to join two sections of track electrically and mechanically	555 1 2206	1	2	3	555 2 2206	1	2	3
	<b>L-coupler</b> with feeding option earth outside	555 1 2209	1	2	3	555 2 2209	1	2	3
	<b>L-coupler</b> with feeding option earth inside	555 1 2210	1	2	3	555 2 2210	1	2	3
	<b>I-coupler</b> with feeding option	555 1 2208	1	2	3	555 2 2208	1	2	3
	<b>Flex-coupler</b> 30° to 330° with feeding option	555 1 2211	1	2		555 2 2211	1	2	
	<b>Mid feed</b> to be placed anywhere along the track; track cutting not required	555 1 5203	1	2	3	555 2 5203	1	2	3

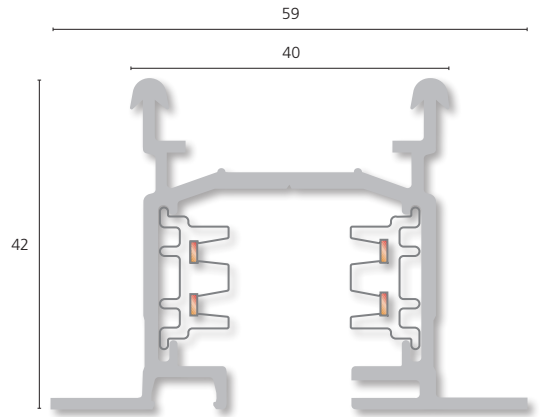
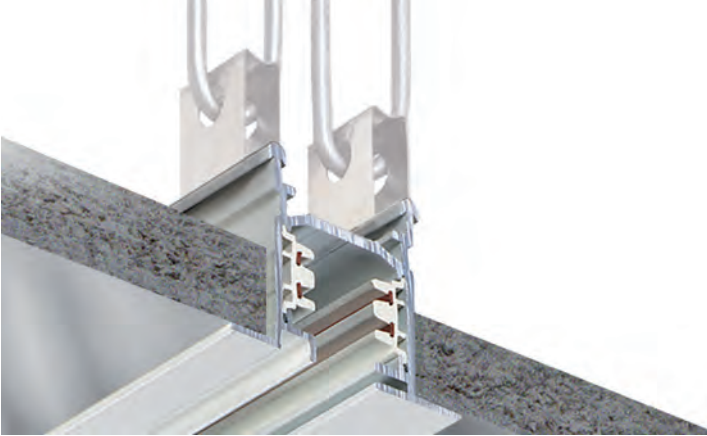
- ■ ■ ■ ■ **Project:** Stadtmuseum Fellbach, **Product:** Kiteo Stromschienen-Spot 12F with dynamic white light, turnable brightness and colour temperature 2700-6500 Kelvin, **Manufacturer:** Kiteo GmbH & Co. KG
- Project:** Tomasso Brothers Fine Art, **Product:** Track Mounted DR2 with QR111 Lamp, **Manufacturer:** Remote Controlled Lighting Ltd.
- Project:** Comma Shop in Tettngang, **Product:** Leuchte STV-7017, **Manufacturer:** A.L.S. Architektonische Lichtsysteme GmbH & Co. KG
- Project:** EDEKA Neukauf Aschoff, Kassel, **Product:** Ontero CS 170, **Manufacturer:** BÄRO GmbH&Co KG
- Project:** Holzland Klatt, **Product:** Picco Duo und Stoffpendelleuchte, **Manufacturer:** Ruco Licht GmbH



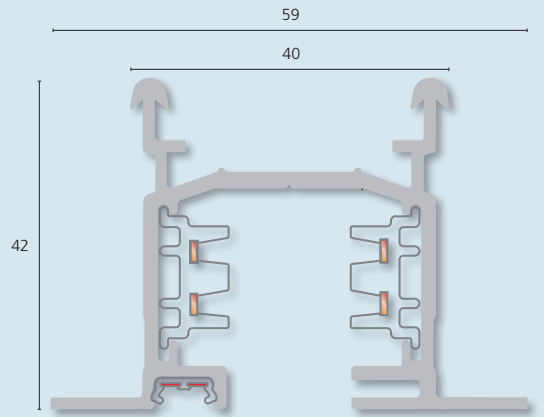


3~

## Recessed track



## + Data bus



Mechanical load:  
page 50



Wiring diagram and  
information: page 52



Weight per meter:  
1.15 Kg



Cutting to length possible  
on site

**5-conductor recessed track** for three circuits, consists of an extruded aluminium profile and two PVC supporter profiles, each with two impeded 2.5 mm<sup>2</sup> cross section copper conductors, for three independent switchable circuits, earthing through the aluminium profile.

Easily field cut able with a standard saw, no cutting back or bending back of conductors necessary. The track may be used within arm's reach. The housing profile offers an easy and flexible suspension solution by using snap hanger (557 0 5321 0).

EUTRAC adapters with data bus contacts can be used in tracks without data bus. Data functionality is not available in those cases.

			○
2m	26-20	1	
3m	26-30	1	
4m	26-40	1	

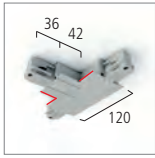
## + Data bus

**7-conductor recessed track** for three circuits plus data bus, consists of an extruded aluminium profile and two PVC supporter profiles, each with two impeded 2.5 mm<sup>2</sup> cross section copper conductors, plus one PVC supporter profile with two impeded 1 mm<sup>2</sup> cross section nickel plated copper conductors, for three independent switchable circuits, earthing through the aluminium profile plus two data conductors.

Easily field cut able with a standard saw, no cutting back or bending back of conductors necessary. The track may be used within arm's reach. The housing profile offers an easy and flexible suspension solution using snap hanger (557 0 5321 0). The track system can be integrated into a building management system. Adapter with data bus contacts and SELV safety device ensure compliance with the Safety Extra Low Voltage regulations (SELV according to EN 60950).

The data information can be picked up anywhere along the track via data bus equipped adapters. Beside the DALI protocol the data bus can be used for DMX, 0-10V or KNX protocols. Adapters without data bus contacts can be also used in tracks with data bus. Data functionality is not available in those cases.

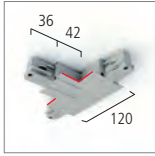
			○
2m	226-20	1	
3m	226-30	1	
4m	226-40	1	



**T-coupler**  
with feeding option  
earth inside **right**  
ceiling support flange

555 1 3212 1

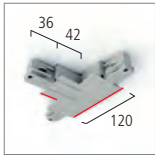
555 2 3212 1



**T-coupler**  
with feeding option  
earth inside **left**  
ceiling support flange

555 1 3213 1

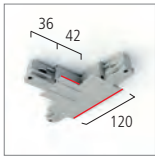
555 2 3213 1



**T-coupler**  
with feeding option  
earth outside **right**  
ceiling support flange

555 1 3214 1

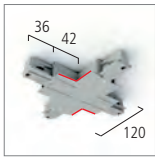
555 2 3214 1



**T-coupler**  
with feeding option  
earth outside **left**  
ceiling support flange

555 1 3215 1

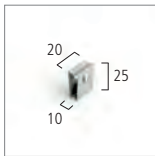
555 2 3215 1



**X-coupler**  
with feeding option  
ceiling support flange

555 1 3216 1

555 2 3216 1

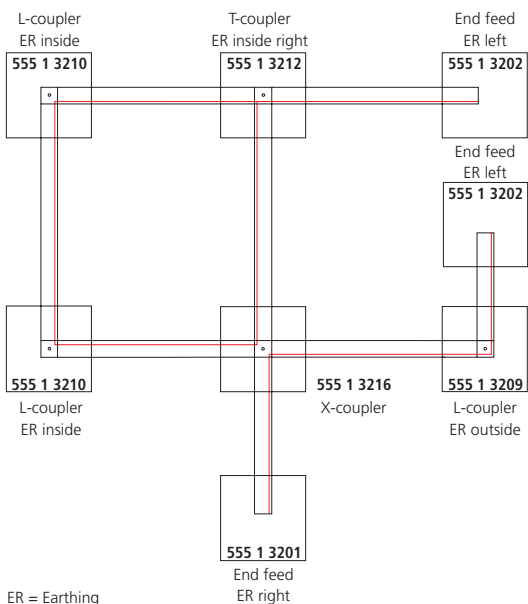


**Snap hanger**  
for suspension with fast fixing  
devices provided on site,  
6 pieces per packing unit

557 0 5321 0

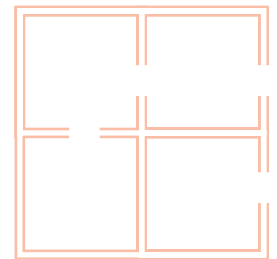
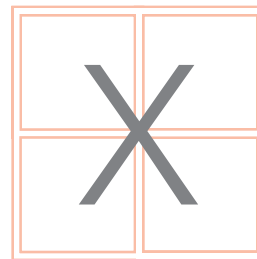
557 0 5321 0

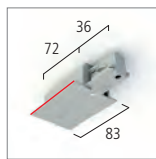
earth run layout help



connection diagram for data bus wiring layout

Attention: no closed circle structure

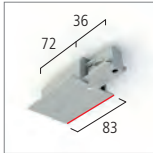




**End feed**  
earth right  
ceiling support flange

555 1 3201 1

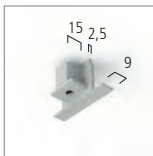
555 2 3201 1



**End feed**  
earth left  
ceiling support flange

555 1 3202 1

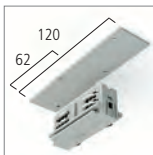
555 2 3202 1



**End cap**  
ceiling support flange

555 0 3217 1

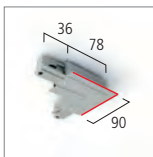
555 0 3217 1



**Electrical and mechanical straight coupler**  
to join two sections of track electrically and mechanically

555 1 3206 1

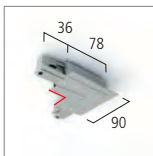
555 2 3206 1



**L-coupler**  
with feeding option  
earth outside  
ceiling support flange

555 1 3209 1

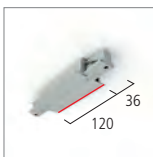
555 2 3209 1



**L-coupler**  
with feeding option  
earth inside  
ceiling support flange

555 1 3210 1

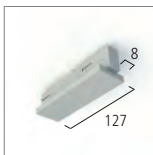
555 2 3210 1



**I-coupler**  
with feeding option  
ceiling support flange

555 1 3208 1

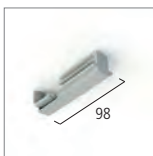
555 2 3208 1



**Mid feed**  
to be placed anywhere  
along the track;  
track cutting not required

555 1 5203 1

555 2 5203 1



**End feed**  
concealed, flush with profile

555 1 3205 1



■ ■ ■ ■ ■ Project: FLAGSHIP STORE MOLteni & C-DADA New York (USA), Arch.: Studio Cerri & Associati, Photo: Sebastiano Pellion di Persano, Product: OTO, design Foster & Partners, Manufacturer: Artemide S.p.A.



3~

## MultiAdapter with data bus option



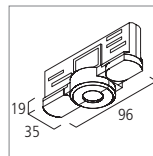
### MultiAdapter

for 3~ circuit track, prepared for data bus contacts (data bus contact with SELV safety chip, part no. 99-698-0). Screw termination, approved for 6A inductive / 6A ohmic up to 250V. With earth contact, circuit selection by turnkey switch and optional neutral position during operation.

Due to double mechanical locking perfect track fixing even when using heavy spotlights. Maximum load up to 5 kg, or 10 kg when using retaining collar 99-066-.

Suitable for various other 3~ circuit tracks.

Housing: self-extinguishing polycarbonate according to class V0.



**MultiAdapter**  
with data bus option  
accessories:  
retaining collar page 45



99-759-

○	●	◇	●
1	2	3	8

+ Data bus

+ Data bus



### Data bus contact pcb

With SELV - safety chip and gold plated spring contact pins, for use in MultiAdapter 99-759-

99-698-0

3~

## UniCompact Adapter with data bus option



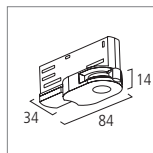
### UniCompactAdapter

for 3~ circuit track, prepared for data bus contacts (data bus contact with SELV safety chip, part no. 98-657-0). Screw less termination, approved for 6A inductive / 6A ohmic up to 250V. With earth contact, circuit selection by turnkey switch and optional neutral position during operation.

Due to double mechanical locking perfect track fixing even when using heavy spotlights. Maximum load up to 10 kg.

Suitable for various other 3~ circuit tracks.

Housing material: self-extinguishing polycarbonate according to class V0.



**UniCompactAdapter**  
with data bus option,  
accessories:  
retaining collar page 44  
400 pieces per packing unit

99-129-

○	●	◇	●
1	2		8

+ Data bus

+ Data bus



### Data bus contact pcb

With SELV - safety chip and gold plated spring contact pins, for use in UniCompactAdapter 99-129-

98-657-0

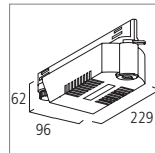


#### MultiPowerAdapter

for 3~ circuit track, prepared for data bus contacts (data bus contacts with SELV safety chip part no. 99-709-0). Approved for 6A inductive / 6A ohmic up to 250V. With earth contact, circuit selection by turnkey switch and optional neutral position during operation. Due to double mechanical locking perfect track fixing even when using heavy spotlights. Maximum load up to 5 kg, or 10 kg when using retaining collar 99-066-. The housing permits electronic ballast for high pressure lamps, fluorescent lamps, low voltage halogen lamps as well as LEDs. In combination with DALI or DMX ballast, data bus contacts and EUTRAC data track high functionality.

Suitable for various other 3~ circuit tracks. Shipped as two sub assembled parts. Housing: self-extinguishing polycarbonate according to class V0.

**Maximum housing space for ballasts: L x W x H = 148 x 90 x 40 mm**



#### MultiPowerAdapter

empty housing adapter with data bus option  
shipped as two sub assembled parts  
accessories: retaining collar page 45

99-125-

	○	●	◇
	1	2	3

■ ■ ■ ■ Project: Intersport Hugel, Product: Picco Duo,  
Manufacturer: Ruco Licht GmbH



### + Data bus

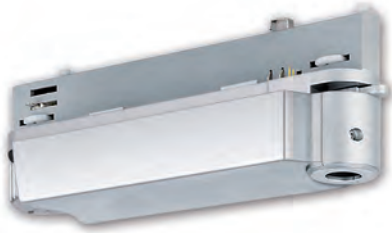
### + Data bus



#### Data bus contact pcb

With SELV - safety chip and gold plated spring contact pins, for use in MultiPowerAdapter 99-125-

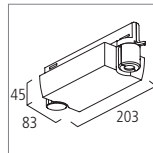
99-709-0



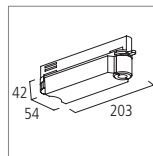
### MultiCompactAdapter

for 3~ circuit track, prepared for data bus contacts (data bus contacts with SELV safety chip part no. 99-709-0). Approved for 6A inductive / 6A ohmic up to 250V. With earth contact, circuit selection by turnkey switch and optional neutral position during operation. Due to double mechanical locking perfect track fixing even when using heavy spotlights. Maximum load up to 5 kg, or 10 kg when using retaining collar 99-066-. The housing permits electronic ballast for high pressure lamps, fluorescent lamps, low voltage halogen lamps as well as LEDs. In combination with DALI or DMX ballast, data bus contacts and EUTRAC data track high functionality.

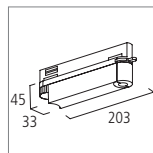
Suitable for various other 3~ circuit tracks. Shipped as two sub assembled parts.  
Housing: self-extinguishing polycarbonate according to class V0.



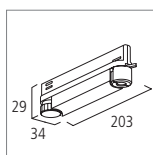
**MultiCompactAdapter L** 99-705-  
empty housing adapter with data bus option shipped as two sub assembled parts, **maximum housing space for ballasts: L x W x H = 110 x 70 x 29 mm**  
accessories: retaining collar page 45



**MultiCompactAdapter M** 98-720-  
empty housing adapter with data bus option shipped as two sub assembled parts, **maximum housing space for ballasts: L x W x H = 120 x 48 x 25 mm**  
accessories: retaining collar page 45



**MultiCompactAdapter XS** 98-721-  
empty housing adapter with data bus option shipped as two sub assembled parts, **maximum housing space for ballasts: L x W x H = 116 x 26 x 32 mm or 97 X 26 X 40 mm**  
accessories: retaining collar page 44



**MultiCompactAdapter XXS** 98-666-  
empty housing adapter with data bus option shipped as two sub assembled parts, **maximum housing space for ballasts: L x W x H = 110 x 28 x 16 mm or 100 x 28 x 23,5 mm**  
accessories: retaining collar page 45

	○	●	◇
99-705-	1	2	3
98-720-	1	2	3
98-721-	1	2	3
98-666-	1	2	3

## + Data bus



**Data bus contact pcb**  
With SELV - safety chip and gold plated spring contact pins, for use in MultiCompactAdapter

99-709-0

## + Data bus



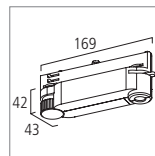
### ElectronicMultiAdapter

for 3~ circuit track, with integrated ballast for metal halide lamps, LEDs or low voltage halogen lamps. With screw termination clamps and nickel plated contacts. Approved for 6A inductive / 6A ohmic up to 250V. With earth contact, circuit selection by turnkey switch and optional neutral position during operation.

Due to double mechanical locking perfect track fixing even when using heavy spotlights. Maximum load up to 5 kg, or 10 kg when using retaining collar 99-066-.

Suitable for various other 3~ circuit tracks.

Housing: self-extinguishing polycarbonate according to class V0.

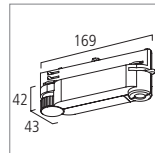


#### ElectronicMultiAdapter.HID

98-607-

incl. electronic ballast for 20W metal halide lamps by OSRAM or GENERAL ELECTRIC, Un = 220-240V (50Hz).

accessories: retaining collar page 45

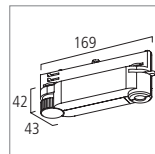


#### ElectronicMultiAdapter.HID

98-703-

incl. electronic ballast for 35W metal halide lamps by OSRAM or GENERAL ELECTRIC, Un = 220-240V (50Hz).

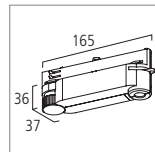
accessories: retaining collar page 45



#### ElectronicMultiAdapter.LED

98-700-

incl. electronic ballast for optional constant – current 350mA max 1-9 LED x 1W current 700mA max 1-4 LED x 3W accessories: retaining collar page 45



#### ElectronicMultiAdapter.LV

99-778-

**For 20-50W**

99-781-

**For 35-105W**

incl. SELV safety transformer for halogen low voltage lamps according to EN 60950, with electronic overload and short-circuit protection, external dimming possible with trailing edge phase dimmer, Un = 220-240V (50-60 Hz) Usec = 11.6 V (SELV)

accessories: retaining collar page 45

	○	●	◇
98-607-	1	2	3
98-703-	1	2	3
98-700-	1	2	3
99-778-	1	2	3
99-781-	1	2	3

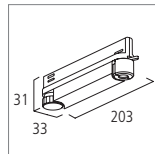


#### DALI-Adapter

for 3~ circuit track, with data bus. Compact housing, universal use, three different feature options with data bus contact pcb incl. SELV safety chip and gold plated spring contact pins. With earth contact, circuit selection by turnkey switch and optional neutral position during operation.

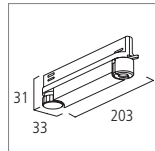
Due to double mechanical locking perfect track fixing even when using heavy spotlights. Maximum load up to 5 kg, or 10 kg when using retaining collar 99-066-.

Housing: self-extinguishing polycarbonate according to class V0.



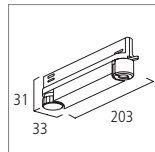
#### DALI-DimAdapter.HV

integrated DALI-LightDim pcb  
220-240V (50Hz) for omic load  
up to 150W, DALI Status LED\*  
accessories:  
retaining collar page 45



#### DALI-DimAdapter.LV

integrated DALI-transformer  
for halogen low voltage  
lamps 35-105W  
Un = 220-240V (50-60Hz)  
Usec = 11.6V (SELV)  
accessories:  
retaining collar page 45



#### DALI-SwitchAdapter

integrated DALI-LightSwitch  
pcb, high voltage relay  
switch 90-265V for 6A.  
Far range switch-mode  
power supply for worldwide  
use. For DALI switching  
discharge lamps with  
control gear up to 150W,  
or conventional ballast up  
to 100W, high voltage  
lamps up to 500W or  
inductive loads up to  
100VA, DALI-Status LED\*  
accessories:  
retaining collar page 45

	○	●	◇
<b>99-700-</b>	1	2	3
<b>99-679-</b>	1	2	3
<b>99-683-</b>	1	2	3

\* The status LED, located at the circuit selection turnkey, indicates the operating mode of the DALI functionality (on/off) and the discharge lamp.



■ ■ ■ ■ ■ Project: Occhio store, München, Product: Più alto² track, Design: Axel Meise, Christoph Kügler, Manufacturer: Occhio GmbH

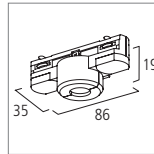


### MultiAdapter

for 1~ circuit track, prepared for data bus contacts (data bus contact with SELV safety chip, part no. 99-698-0). Screw termination, approved for 6A inductive / 6A ohmic up to 250V. With earth contact, circuit selection by turnkey switch and optional neutral position during operation.

Due to double mechanical locking perfect track fixing even when using heavy spotlights. Maximum load up to 5 kg, or 10 kg when using retaining collar 99-066-.

Housing: self-extinguishing polycarbonate according to class V0.



### MultiAdapter

with data bus option

accessories: retaining collar page 45

99-875-

	○	●	◇
1			
2			
3			

## + Data bus



### Data bus contact pcb

With SELV - safety chip and gold plated spring contact pins, for use in MultiAdapter 99-875-

99-698-0

## + Data bus



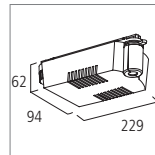
### MultiPowerAdapter

for 1~ circuit track, prepared for data bus contacts (data bus contacts with SELV safety chip part no. 99-709-0). Approved for 6A inductive / 6A ohmic up to 250V. With earth contact, circuit selection by turnkey switch and optional neutral position during operation. Due to double mechanical locking perfect track fixing even when using heavy spotlights. Maximum load up to 5 kg, or 10 kg when using retaining collar 99-066-. The housing permits electronic ballast for high pressure lamps, fluorescent lamps, low voltage halogen lamps as well as LEDs. In combination with DALI or DMX ballast, data bus contacts and EUTRAC data track high functionality.

Shipped as two sub assembled parts.

Housing: self-extinguishing polycarbonate according to class V0.

**Maximum housing space for ballasts: L x W x H = 148 x 90 x 40 mm**



### MultiPowerAdapter

empty housing adapter with data bus option shipped as two sub assembled parts  
accessories: retaining collar page 45

98-605-

	○	●	◇
	1	2	3

■ ■ ■ ■ ■ Project: Kiteo Showroom / Küche  
Product: Kiteo Stromschienen-Spot 12F DMX, with dynamic white light, turnable brightness and colour temperature 2700-6500 Kelvin and individual colour light  
Manufacturer: Kiteo GmbH & Co. KG



## + Data bus

## + Data bus



### Data bus contact pcb

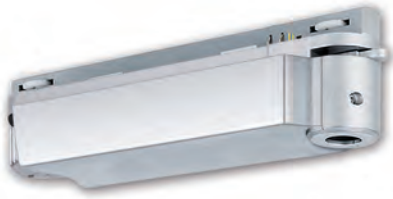
With SELV - safety chip and gold plated spring contact pins, for use in MultiPowerAdapter 98-605-

99-709-0



1~

## MultiCompactAdapter with data bus option

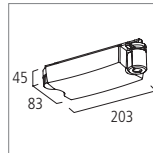


### MultiCompactAdapter

for 1~ circuit track, prepared for data bus contacts (data bus contacts with SELV safety chip part no. 99-709-0). Approved for 6A inductive / 6A ohmic up to 250V. With earth contact, circuit selection by turnkey switch and optional neutral position during operation. Due to double mechanical locking perfect track fixing even when using heavy spotlights. Maximum load up to 5 kg, or 10 kg when using retaining collar 99-066-. The housing permits electronic ballast for high pressure lamps, fluorescent lamps, low voltage halogen lamps as well as LEDs. In combination with DALI or DMX ballast, data bus contacts and EUTRAC data track high functionality.

Shipped as two sub assembled parts.

Housing: self-extinguishing polycarbonate according to class V0.



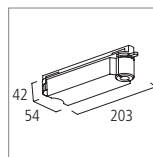
### MultiCompactAdapter L

98-601-

○ ● ◇

1 2 3

empty housing adapter with data bus option shipped as two sub assembled parts, **maximum housing space for ballasts: L x W x H = 110 x 70 x 29 mm**  
accessories: retaining collar page 45

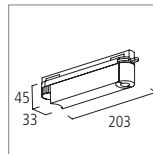


### MultiCompactAdapter M

98-722-

1 2 3

empty housing adapter with data bus option shipped as two sub assembled parts, **maximum housing space for ballasts: L x W x H = 120 x 48 x 25 mm**  
accessories: retaining collar page 45

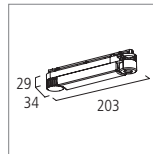


### MultiCompactAdapter XS

98-588-

1 2 3

empty housing adapter with data bus option shipped as two sub assembled parts, **maximum housing space for ballasts: L x W x H = 116 x 26 x 32 mm or 97 X 26 X 40 mm**  
accessories: retaining collar page 44



### MultiCompactAdapter XXS

98-512-

1 2 3

empty housing adapter with data bus option shipped as two sub assembled parts, **maximum housing space for ballasts: L x W x H = 110 x 28 x 16 mm or 100 x 28 x 23,5 mm**  
accessories: retaining collar page 45

+ Data bus

+ Data bus



### Data bus contact pcb

99-709-0

With SELV - safety chip and gold plated spring contact pins, for use in MultiCompactAdapter

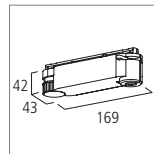


### ElectronicMultiAdapter

for 1~ circuit track, with integrated ballast for metal halide lamps, LEDs or low voltage halogen lamps. With screw termination clamps and nickel plated contacts. Approved for 6A inductive / 6A ohmic up to 250V. With earth contact, circuit selection by turnkey switch and optional neutral position during operation.

Due to double mechanical locking perfect track fixing even when using heavy spotlights. Maximum load up to 5 kg, or 10 kg when using retaining collar 99-066-.

Housing: self-extinguishing polycarbonate according to class V0.

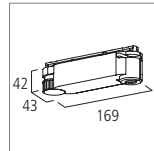


#### ElectronicMultiAdapter.HID

incl. electronic ballast for 20W metal halide lamps by OSRAM or GENERAL ELECTRIC,  $U_n = 220-240V$  (50Hz).  
accessories: retaining collar page 45

98-615-

○	●	◇
1	2	3

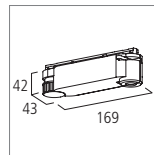


#### ElectronicMultiAdapter.HID

incl. electronic ballast for 35W metal halide lamps by OSRAM or GENERAL ELECTRIC,  $U_n = 220-240V$  (50Hz).  
accessories: retaining collar page 45

98-585-

○	●	◇
1	2	3

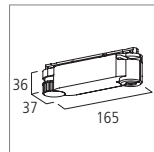


#### ElectronicMultiAdapter.LED

incl. electronic ballast for optional constant – current 350mA max 1-9 LED x 1W  
current 700mA max 1-4 LED x 3W  
accessories: retaining collar page 45

98-587-

○	●	◇
1	2	3



#### ElectronicMultiAdapter.NV

##### For 20-50W

##### For 35-105W

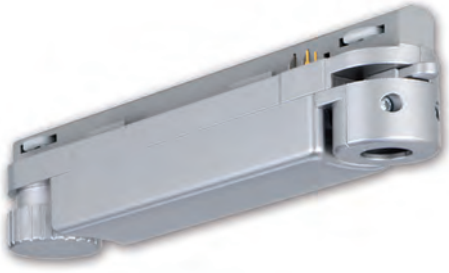
incl. SELV safety transformer for halogen low voltage lamps according to EN 60950, with electronic overload and short-circuit protection, external dimming possible with trailing edge phase dimmer,  $U_n = 220-240V$  (50-60 Hz)  
 $U_{sec} = 11.6 V$  (SELV)  
accessories: retaining collar page 45

98-609-

○	●	◇
1	2	3

98-586-

○	●	◇
1	2	3

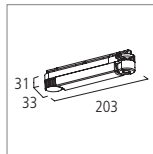


### DALI-Adapter

for 1~ circuit track, with data bus. Compact housing, universal use, three different feature options with data bus contact pcb incl. SELV safety chip and gold plated spring contact pins. With earth contact, circuit selection by turnkey switch and optional neutral position during operation.

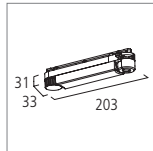
Due to double mechanical locking perfect track fixing even when using heavy spotlights. Maximum load up to 5 kg, or 10 kg when using retaining collar 99-066-.

Housing: self-extinguishing polycarbonate according to class V0.



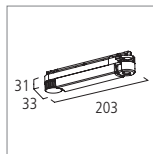
#### DALI-DimAdapter.HV

integrated DALI-LightDim pcb  
220-240V (50Hz) for omic load  
up to 150W, DALI Status LED\*  
accessories:  
retaining collar page 45



#### DALI-DimAdapter.LV

integrated DALI-transformer  
for halogen low voltage  
lamps 35-105W  
Un = 220-240V (50-60Hz)  
Usec = 11.6V (SELV)  
accessories:  
retaining collar page 45



#### DALI-SwitchAdapter

integrated DALI-LightSwitch  
pcb, high voltage relay switch  
90-265V for 6A.  
Far range switch-mode  
power supply for worldwide  
use. For DALI switching  
discharge lamps with  
control gear up to 150W,  
or conventional ballast  
up to 100W, high voltage  
lamps up to 500W or  
inductive loads up to  
100VA, DALI-Status LED\*  
accessories:  
retaining collar page 45

	○	●	◇
98-616-	1	2	3
98-612-	1	2	3
98-617-	1	2	3

\* The status LED, located at the circuit selection turnkey, indicates the operating mode of the DALI functionality (on/off) and the discharge lamp.

1~

3~

## Retaining collar suitable for adapter

**Retaining collar**

with outside thread incl. smart slider for 360° rotation  
material: aluminium die cast

for pendant rod M8 x 1

■ ■ 98-554-0

**Retaining collar**

with outside thread incl. smart slider for 360° rotation  
material: aluminium die cast

for pendant rod M10 x 1

■ ■ 98-550-0

**Retaining collar**

with outside thread incl. smart slider for 360° rotation  
material: aluminium die cast

for pendant rod M13 x 1

■ ■ 98-551-0


**Retaining collar**

with outside thread and outside arrester  
incl. smart slider for 360° rotation  
material: aluminium die cast  
for pendant rod M10 x 1  
for pendant rod M13 x 1

■ ■ 98-590-0

■ ■ 98-591-0

**Retaining collar**

for mounting bracket with outside thread  
M10 x 1,  slot holes 10.2 x 9.2 in  
bracket, incl. smart slider for 360° rotation  
material: aluminium die cast


■ ■ 98-552-

1

2

3

**Retaining collar**

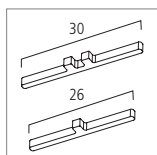
for mounting bracket with outside thread  
M13 x 1,  slot holes 13.2 x 10.2 in  
bracket, incl. smart slider for 360° rotation  
material: aluminium die cast

■ ■ 98-553-

1

2

3

**Smart slider** Fixed

material: brass

98-626-0

**Smart slider** 360° rotation

material: brass

98-622-0

○

●

◇

●

Retaining collars  
on this page  
will fit into  
the following  
adapter



XS 98-588-

99-129-

XS 98-721-

1~

3~

## Retaining collar suitable for adapter



**Retaining collar**  
with internal thread

for pendant rod M8 x 1



**Retaining collar**  
with internal thread

for pendant rod M10 x 1



**Retaining collar**  
with internal thread

for pendant rod M13 x 1



**Retaining collar**  
for mounting bracket with  
outside thread M10 x 1,  
bracket holes Ø10.5 or 13.5 mm  
incl. strain relief



**Retaining collar**  
for mounting bracket with  
outside thread M13 x 1,  
bracket holes Ø13.5 or 16.5 mm  
incl. strain relief



**Retaining collar**  
for cable 3 x 0.75mm<sup>2</sup>  
or DALI cable  
incl. strain relief



**Retaining collar**  
for cable 3 x 0.75mm<sup>2</sup> or  
DALI cable incl. steel wire  
L = 1.5 meter for load up to  
5 Kg, for pendant light fixture

	○	●	◇	●
■ ■ 99-080-	1	2	3	
■ ■ 99-084-	1	2	3	8
■ ■ 99-085-	1	2	3	
■ ■ 99-086-	1	2	3	
■ ■ 99-066-	1	2	3	
■ ■ 99-083-	1	2	3	
■ ■ 99-292-	1	2	3	

Retaining collars  
on this page  
will fit into  
the following  
adapter



99-875-



L 98-601-  
M 98-722-  
XXS 98-512-



98-605



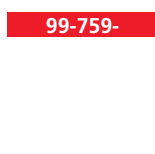
HIT 98-615-  
HIT 98-585-  
NV 98-609-  
NV 98-586-  
LED 98-587-



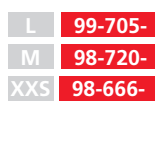
HV 98-616-  
NV 98-612-



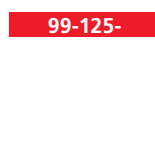
SW 98-617-



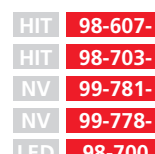
99-759-



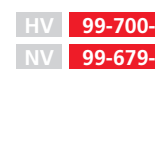
L 99-705-  
M 98-720-  
XXS 98-666-



99-125-



HIT 98-607-  
HIT 98-703-  
NV 99-781-  
NV 99-778-  
LED 98-700

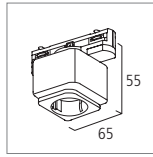


HV 99-700-  
NV 99-679-



SW 99-683-

## 1~ Socket outlet adapter



**1~ Socket outlet MultiAdapter** ■ 98-621-  
for Schuko plug protection  
class I devices and Europlug  
class II devices, for 220-240V  
with 6.3A time-lag fuse

with Switzerland socket outlet ■ 98-624-  
  
suitable for various other  
1~circuit tracks

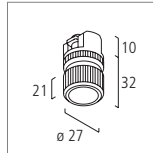
	○	●	◇
98-621-	1	2	
98-624-	1	2	

## 1~ Mechanical adapter



### Mechanical universal adapter

for fixing heavy bracket mounted spots and other fittings. A mechanical safety catch with retaining spring prevents spots from falling down when adapter is unfastened.



**Mechanical universal adapter** ■ 99-099-  
for loads up to 10 Kg  
hole in bracket  
Ø 16.5 mm

	○	●	◇
99-099-	1	2	



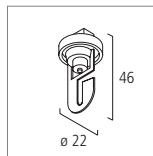
**1~Wire Adapter** ■ 98-630-  
for pendant light fixtures  
Wire Ø 1.5 mm, L = 1.5 meter  
for loads up to 10 Kg

	○	●	◇
98-630-	1	2	3



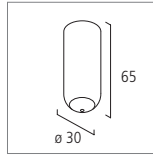
### Mechanical universal hook

Suspension possibilities for shop and display areas; also suitable for pendant light fixtures, maximum wire cross section 2 mm<sup>2</sup>.



**Mechanical universal hook** ■ 98-625-  
for loads up to 10 Kg

	○	●	◇
98-625-	1	2	

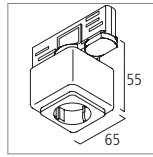


**Cap for universal hook** ■ 99-284-  
1 2 3

	○	●	◇
99-284-	1	2	3

3~

## Socket outlet adapter



### 3-socket outlet MultiAdapter

for Schuko plug, protection class I devices and Europlug class II devices, for 220-240V with 6.3A time-lag fuse

with Switzerland socket outlet

suitable for various other 3~ circuit tracks

■ 99-095-

○	●	◇
1	2	
1	2	

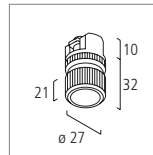
3~

## Mechanical adapter



### Mechanical universal adapter

for fixing heavy bracket mounted spots and other fittings. A mechanical safety catch with retaining spring prevents spots from falling down when adapter is unfastened.



### Mechanical universal adapter

for loads up to 10 Kg  
hole in bracket  $\varnothing$  16.5 mm  
suitable for various other 3~ circuit tracks

■ 99-099-

○	●	◇
1	2	



### 3-Wire Adapter

for pendant light fixtures  
Wire  $\varnothing$  1.5 mm, L = 1.5 meter  
for loads up to 10 Kg

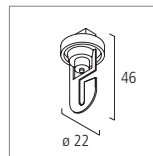
■ 99-787-

○	●	◇
1	2	3



### Mechanical universal hook

Suspension possibilities for shop and display areas; also suitable for pendant light fixtures, maximum wire cross section 2 mm<sup>2</sup>.

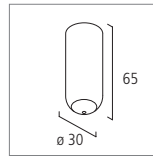


### Mechanical universal hook

for loads up to 10 Kg

■ 99-067-

○	●	◇
1	2	



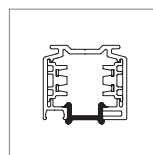
### Cap for universal hook

■ 99-284-

○	●	◇
1	2	3

3~

## Cover profile



### Cover

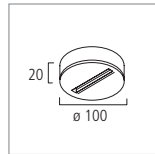
for 3~ track, L = 1 meter  
material: PVC

■ 88-888-

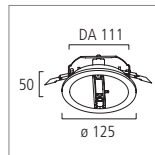
○	●	◇
1	2	

**Surface / recessed mounted monopoints,**

1~ circuit primary feed, possibility for wiring through. Electrical load max. 250V/16A, gold plated contacts, integrated data bus for use of EUTRAC adapter with or without data bus contacts.

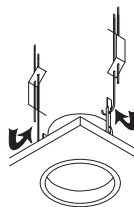
**Surface-Universal Monopoint**

with data bus contacts for 1~ MultiAdapter with or without data bus contacts for loads up to 10 Kg

**Recessed-Universal Monopoint**

with data bus contacts for 1~ MultiAdapter with or without data contacts for loads up to 6 Kg

Designed for slab thickness up to 25 mm.



Up to 10 Kg loads by use of fast hanger supplied on site

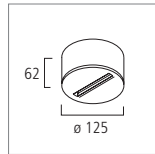
 Ceiling cut-out Ø 111 mm

	○	●	◇
98-614-	1	2	3
98-613-	1	2	3

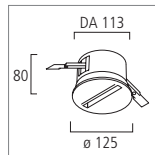


**Surface / recessed mounted monopoints,**

3~ circuit primary feed, possibility for wiring through. Electrical load max. 250V/16A, gold plated contacts, integrated data bus for use of EUTRAC adapter with or without data bus contacts.

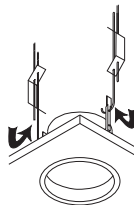
**Surface-Universal Monopoint**

with data bus contacts for 3~ MultiAdapter and UniCompactAdapter with or without data bus contacts, as well as DALI-LightMotionSensor 98-421- suitable for various other 3~ circuit adapters with a maximum length of 95 mm for loads up to 10 Kg


**Recessed-Universal Monopoint**

with data bus contacts for 3~ MultiAdapter and UniCompactAdapter with or without data bus contacts, as well as DALI-LightMotionSensor 98-421- suitable for various other 3~ circuit adapters with a maximum length of 95 mm for loads up to 6 Kg

Designed for slab thickness up to 25 mm.



Up to 10 Kg loads by use of fast hanger supplied on site

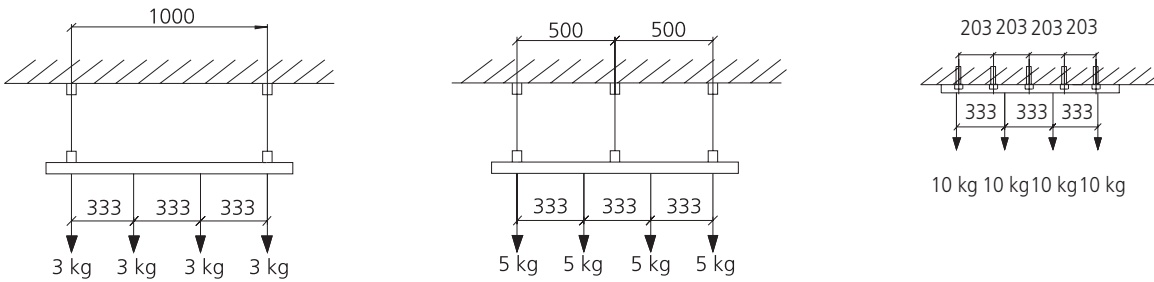
 Ceiling cut-out Ø 113 mm

	○	●	◇
99-902-	1	2	3
99-904-	1	2	3

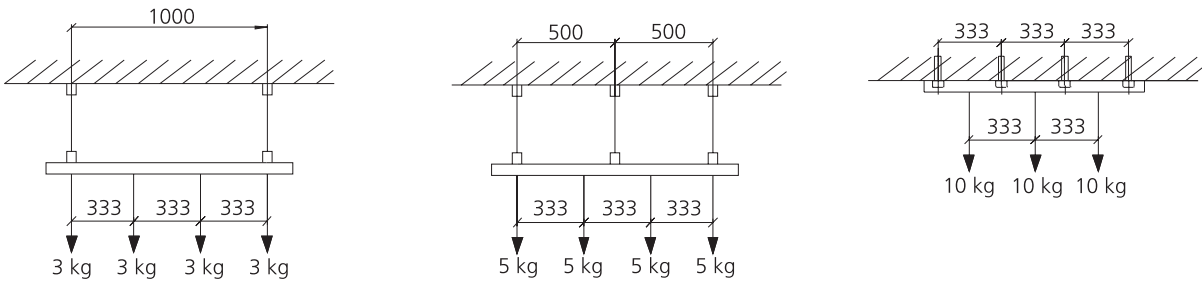
# Mechanical load

Drawings below show the possible maximum load of spot lights and other devices on the 1~ and 3~ track accordingly to their mounting or suspension points. The track weight is already taken into consideration.

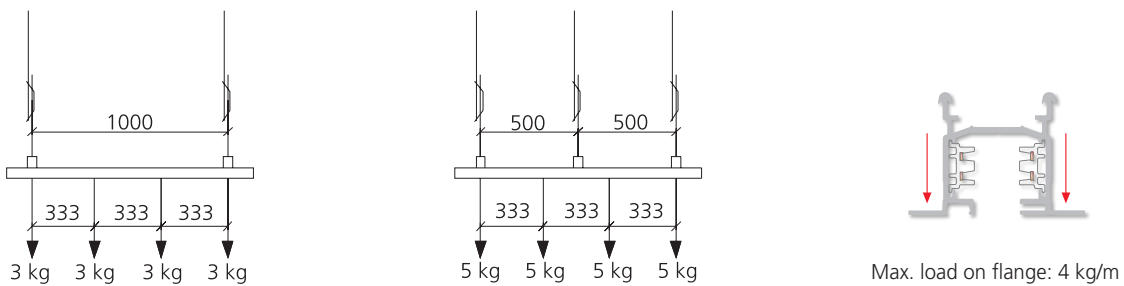
Surface track 235-.../238-...



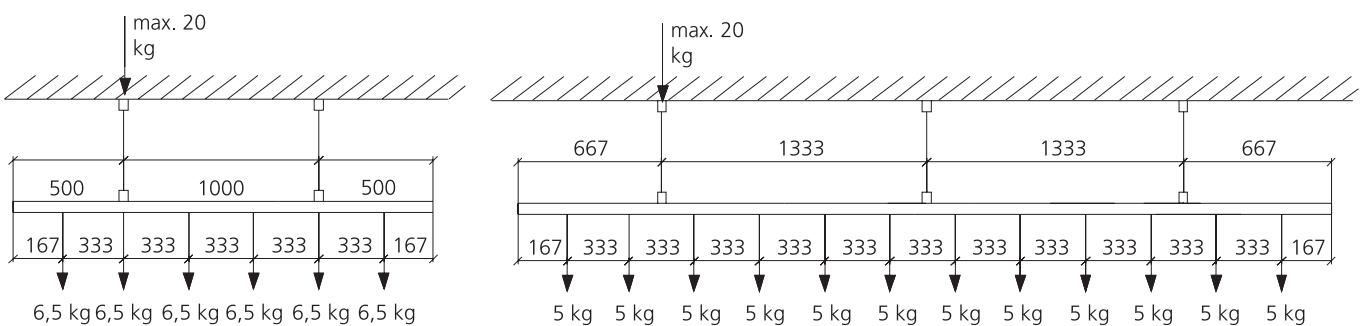
Surface track 25-.../ 225-...



Recessed track 26-.../226-...



HighTrack 19-.../ 219-...

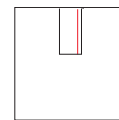
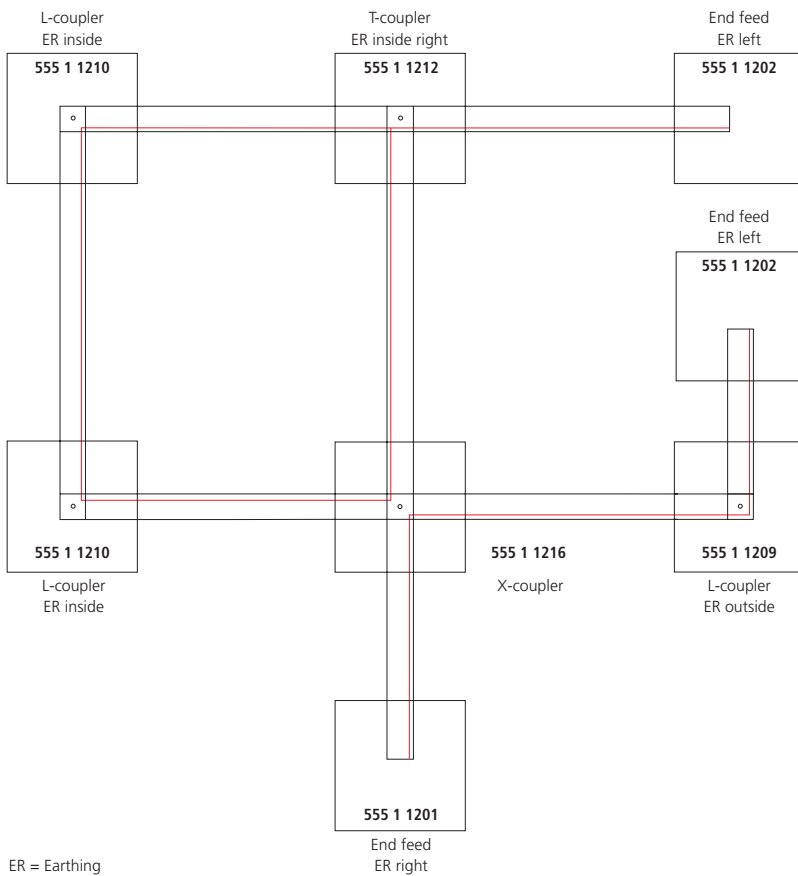


# Layout help

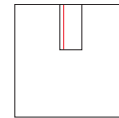
## Layout help for continue earthing for 3~ surface track.

The track offers the earthing along one inner side of the profile. When planing the layout you need to consider earth continuity. The location of the earthing is defined by the view in direction of the track. The layout needs to be looked at true sided from above. Please see sketch below as a layout help. Choose the right end feed and coupling components from the given pictures.

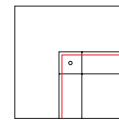
Layout shows surface track from a bird's eye view with the track opening pointed downwards.



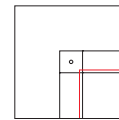
**End feed**  
earth right  
555 1 1201



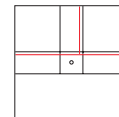
**End feed**  
earth left  
555 1 1202



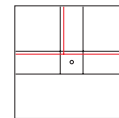
**L-coupler**  
earth outside  
555 1 1209



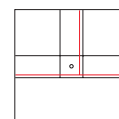
**L-coupler**  
earth inside  
555 1 1210



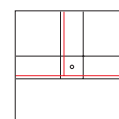
**T-coupler**  
earth inside right  
555 1 1212



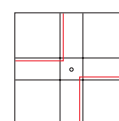
**T-coupler**  
earth inside left  
555 1 1213



**T-coupler**  
earth outside right  
555 1 1214



**T-coupler**  
earth outside left  
555 1 1215



**X-coupler**  
555 1 1216

# Important safety notes / electrical connection / wiring diagram

## Important safety notes!

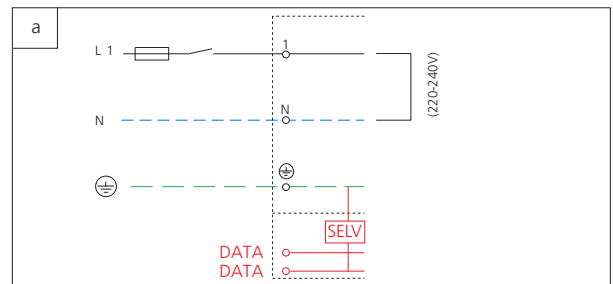
Please consider all safety notes from the technical manual. Keep them carefully in case you will extend or change the installation. The technical manual is also available from our web page [www.eutrac.de](http://www.eutrac.de)

Lighting tracks are for indoor use only (IP20, 45°C max.), do not use in damp or wet locations.

### 1~ track wiring diagram

- a) Connection to AC 230V (220 - 240V)  
maximum load: 3.600 W (3.500 - 3.800 W)

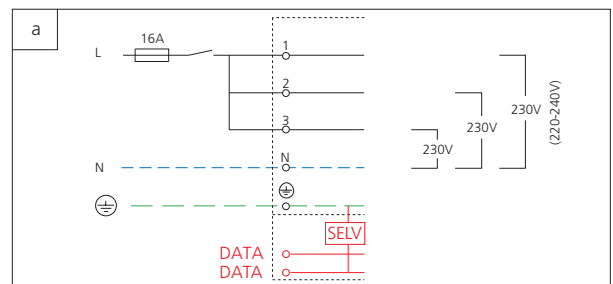
fuse 1 x 16 A  
power supply cable min. 3 x 1.5 mm<sup>2</sup>  
power supply cable min. 3 x 2.5 mm<sup>2</sup>



### 3~ track wiring diagram

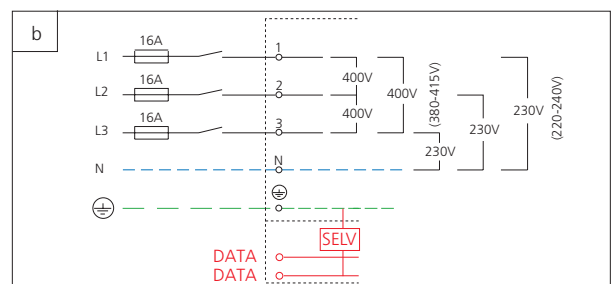
- a) Connection to AC 230V (220 - 240V)  
maximum load: 3.600 W (3.500 - 3.800 W)  
Total load can spread on any circuit

fuse 1 x 16 A  
power supply cable min. 3 x 1.5 mm<sup>2</sup>  
power supply cable min. 3 x 2.5 mm<sup>2</sup>



- b) Connection to AC 400V (380 - 415V)  
maximum load: 3 x 3.600 W = 10.800 W (11.400 W)  
Single fuse for each circuit, look for even spread L<sub>1</sub>, L<sub>2</sub>, L<sub>3</sub> of total load

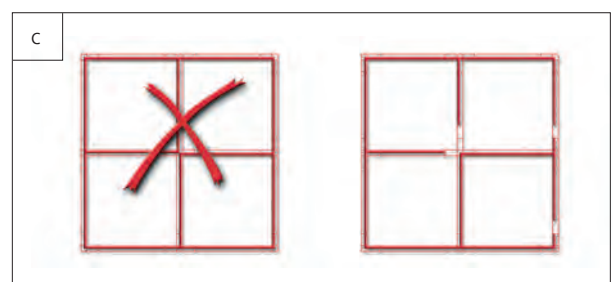
fuse 3 x 16 A  
power supply cable min. 5 x 1.5 mm<sup>2</sup>  
power supply cable min. 5 x 2.5 mm<sup>2</sup>



Load at end feed: All end feeds can be loaded as shown under a) or b)

Connection diagram for data bus wiring

Attention: no closed circle structure otherwise data bus functionality will be not given.



## Trademarks and patents

**EUTRAC®**

**EUTRAC | DALI**  
the intelligent track™

Are registered trademarks of Eutrac Stromschienen GmbH.

The **EUTRAC lighting track with data bus** is patented.

## Regulations

All lighting tracks and components are CE conform, comply to relevant standards and regulations and designed according to the ENEC standards. All electronic parts are EMC tested. The data bus track system complies with and is tested against DIN EN 60570 for 250V/16A standard and may be used in arm's reach. In conjunction with SELV- (Safety Extra Low Voltage against EN 60950) safety data bus contacts all commodities DALI ballasts can be used with the EUTRAC | DALI data bus track system.

## Conformity declaration

Eutrac Stromschienen GmbH herewith declares that all components of the lighting track system comply with the following European standards:

Low Voltage regulation 73/23/EWG  
EMC regulation 89/336/EWG  
EN 60598  
EN 60570



EUTRAC member of the AG DALI.

DALI: „Digital Addressable Lighting Interface“ is the standard protocol for the lighting industry. It can be easily set up and installed by the electrician. There are 64 devices available per line.

## DALI System installation

### Maximum of devices

The quantity of devices connected to a DALI line is restricted by 64 DALI addresses and a current consumption of max 200 mA in total.

### Advice

Please note by many DALI participants the DALI reaction time may be slowed down due to the data traffic on the bus.

### Wiring

The signal transmission in a DALI system is carried out by a two core leads. The cable isolation of the signal leads must be the same as for mains voltage cable, as DALI is a non SELV system. The conductor cross section (Cu) should be a minimum of 1,5 mm<sup>2</sup>. The signal conductors could be part of e.g. 5-core NYM mains cable; three cores are used for the mains voltage supply (L, N, PE) and the left two for the DALI signal. Do not use signal leads dimensioned for extra low voltage e.g. I-Y(St)Y or similar, since the DALI components are not according to the requirements for safety extra low voltage (SELV). By disregarding safety instructions live parts can be touched due to defects which can result in life danger.

### Cable length

The total cable length between the last DALI participant and the NetComposer should not exceed 300 meter (approx. 1000ft) including the cable length to feed the track. The total length of data bus track wiring should not exceed 150 meter.

### Connect devices

Most DALI devices can be connected at any polarity. In case you have to connect polarity dependant DALI devices (recognizable e.g. by the terminal marks „+“ and „-“), you must always connect the conductors in the same polarity.

DMX512/RDM:“ Digital multiplex Signal“ is the standard protocol used in the stage lighting industry. It is characterized by rugged wiring and fast and safe data transfer. There are 512 channels available per line.

## DMX System installation

### Maximum participants

A DMX system (also named DMX „universe“) operates with 512 addresses or channels. This ends up in a maximum of 32 devices. If more devices are used then the use of a galvanic separated DMX repeater is needed. By a star-shaped installation a galvanic separated DMX splitter is needed.

### Wiring

DMX requires the use of twisted shielded two-wire cable with a characteristic impedance of 110 Ohm. The shield has to be connected to DMX GND. The wiring system needs to be closed at each end by a 120 Ohm - resistor. The NetComposer has a resistor already built in.

### Cable length

Lighting track system with data bus could be used for DMX operation up to max. 50 meter length. The track should be operated as a isolated galvanic universe. In this case the DMX GND will not be used. Only SELV devices should be used on the track system **Caution!** DMX GND shall not be connected to the PE connection of the housing device or of a 230V mains connection cable.

### Connect devices

The data transmission in a DMX system is polarity dependant. Pay attention during installation and use a DMX cable tester to check the polarity.

Test certification marks    

Trademarks  **DMX** 

# Index

Item	Page	Item	Page	Item	Page	Item	Page
18-400	21	555 1 5203 .	11, 25, 31	98-586-	42	99-129-	33
19-...	23	555 2 1201 .	11	98-587-	42	99-232-0	21
219-...	23	555 2 1202 .	11	98-588-	41	99-284-	46, 47
225-...	09	555 2 1206 .	11	98-591-0	44	99-292-	45
226-...	29	555 2 1208 .	11	98-601-	41	99-318-0	19
235-...	15	555 2 1209 .	11	98-605-	40	99-319-0	19
238-...	15	555 2 1210 .	11	98-607-	36	98-613-	48
25-...	09	555 2 1211 .	11	98-609-	42	98-614-	48
26-...	29	555 2 1212 .	10	98-612-	43	99-619-0	21
459-40-	21	555 2 1213 .	10	98-615-	42	99-679-	37
555 0 1217 .	11	555 2 1214 .	10	98-616-	43	99-683-	37
555 0 2217 .	25	555 2 1215 .	10	98-617-	43	99-687-	21
555 0 3217 1	31	555 2 1216 .	10	98-621-	46	99-688-	21
555 1 1201 .	11	555 2 2201 .	25	98-622-0	44	99-689-	21
555 1 1202 .	11	555 2 2202 .	25	98-624-	46	99-698-0	33, 39
555 1 1206 .	11	555 2 2206 .	25	98-625-	46	99-700-	37
555 1 1208 .	11	555 2 2208 .	25	98-626-0	44	99-705-	35
555 1 1209 .	11	555 2 2209 .	25	98-630-	46	99-709-0	34, 35, 40, 41
555 1 1210 .	11	555 2 2210 .	25	98-641-0	18	99-759-	33
555 1 1211 .	11	555 2 2211 .	25	98-643-0	18	99-787-	47
555 1 1212 .	10	555 2 2212 .	24	98-645-	18	99-855-	17
555 1 1213 .	10	555 2 2213 .	24	98-650-	47	99-856-	17
555 1 1214 .	10	555 2 2214 .	24	98-657-0	33	99-857-	17
555 1 1215 .	10	555 2 2215 .	24	98-666-	35	99-859-	17
555 1 1216 .	10	555 2 2216 .	24	98-672-0	18	99-861-	17
555 1 2201 .	25	555 2 3201 1	31	98-679-0	18	99-862-	17
555 1 2202 .	25	555 2 3202 1	31	98-697-0	18	99-863-	17
555 1 2206 .	25	555 2 3206 1	31	98-698-0	19	99-865-	17
555 1 2208 .	25	555 2 3208 1	31	98-699-0	19	99-867-	16
555 1 2209 .	25	555 2 3209 1	31	98-700-	36	99-869-	16
555 1 2210 .	25	555 2 3210 1	31	98-703-	36	99-871-	16
555 1 2211 .	25	555 2 3212 1	30	98-720-	35	99-873-	17
555 1 2212 .	24	555 2 3213 1	30	98-721-	35	99-875-	39
555 1 2213 .	24	555 2 3214 1	30	98-722-	41	99-878-	17
555 1 2214 .	24	555 2 3215 1	30	99-778-	36	99-880-	17
555 1 2215 .	24	555 2 3216 1	30	99-781-	36	99-882-	17
555 1 2216 .	24	555 2 5203 .	11, 25, 31	99-018-	19	99-884-	16
555 1 3201 1	31	557 0 1315 .	21	99-066-	45	99-886-	16
555 1 3202 1	31	557 0 5321 0	21, 30	99-067-	47	99-888-	17
555 1 3205 1	31	88-000-0	18	99-075-	19	99-890-	17
555 1 3206 1	31	88-620-0	19	99-080-	45	99-892-	17
555 1 3208 1	31	88-888-	47	99-083-	45	99-894-	16
555 1 3209 1	31	98-512-	41	99-084-	45	99-896-	17
555 1 3210 1	31	98-550-0	44	99-085-	45	99-897-	17
555 1 3212 1	30	98-551-0	44	99-086-	45	99-902-	49
555 1 3213 1	30	98-552-	44	99-095-	47	99-904-	49
555 1 3214 1	30	98-553-	44	99-099-	46, 47	99-905-	19
555 1 3215 1	30	98-554-0	44	99-123-	19	99-906-	19
555 1 3216 1	30	98-585-	42	99-125-	34		

## EUTRAC worldwide



1~

1-Circuit (120V / 220 - 240V)

tracks and adapters

2~

2-Circuit (120V + 277V)

tracks and adapters

3~

3-Circuit (220 - 240V)

tracks and adapters

## Eutrac Stromschienen GmbH

Customer service Germany  
Herderstrasse 18  
D-40721 Hilden  
**Germany**

Phone: +49 (0) 2103 / 90 85 6 - 0  
Fax: +49 (0) 2103 / 90 85 6 - 29  
E-mail: [service@eutrac.de](mailto:service@eutrac.de)  
Web: [www.eutrac.de](http://www.eutrac.de)

Customer service international  
Sperenberger Strasse 1  
D-12277 Berlin  
**Germany**

Phone: +49 (0) 30 / 27 0009 - 0  
Fax: +49 (0) 30 / 27 0009 - 248  
E-mail: [export@eutrac.de](mailto:export@eutrac.de)  
Web: [www.eutrac.de](http://www.eutrac.de)

## Eutrac Italia S.r.l.

Via IV Novembre, 13  
24060 Bagnatica (BG)  
**Italy**

Phone: +39 035 6838 00  
Fax: +39 035 6836 63  
E-mail: [eutrac.italia@tiscali.it](mailto:eutrac.italia@tiscali.it)  
Web: [www.eutrac.com](http://www.eutrac.com)

## Eutrac Corporation, NA

5 Lumen Lane  
Highland, NY 12528-1080  
**USA**

Phone: +1 (845) 691 90 30  
Fax: +1 (928) 447 44 64  
E-mail: [service@eutrac.com](mailto:service@eutrac.com)  
Web: [www.eutrac.com](http://www.eutrac.com)

■ ■ ■ ■ ■ **Project:** ROBERTO CAVALLI HQs & Showroom Milan, Italy  
**Arch.:** Cavalli A&DD, Head Architect Barbara Picciolo  
**Photo:** Beppe Raso  
**Product:** PICTO, in-house design Artemide Architectural  
**Manufacturer:** Artemide S.p.A